

Anti-Lgi1 Rabbit Monoclonal Antibody
Catalog # ABO15976**Specification**

Anti-Lgi1 Rabbit Monoclonal Antibody - Product Information

Application	WB, IHC, IP
Primary Accession	O95970
Host	Rabbit
Isotype	IgG
Reactivity	Rat, Human, Mouse
Clonality	Monoclonal
Format	Liquid

Description

Anti-Lgi1 Rabbit Monoclonal Antibody . Tested in WB, IHC, IP applications. This antibody reacts with Human, Mouse, Rat.

Anti-Lgi1 Rabbit Monoclonal Antibody - Additional Information

Gene ID 9211

Other Names

Leucine-rich glioma-inactivated protein 1, Epitempin-1, LGI1, EPT

Calculated MW

64 kDa KDa

Application Details

WB 1:500-1:2000
IHC 1:50-1:200
IP 1:50

Contents

Rabbit IgG in phosphate buffered saline, pH 7.4, 150mM NaCl, 0.02% sodium azide and 50% glycerol, 0.4-0.5mg/ml BSA.

Immunogen

A synthesized peptide derived from human Lgi1

Purification

Affinity-chromatography

Storage

Store at -20°C for one year. For short term storage and frequent use, store at 4°C for up to one month. Avoid repeated freeze-thaw cycles.

Anti-Lgi1 Rabbit Monoclonal Antibody - Protein Information

Name LGI1

Synonyms EPT

Function

Regulates voltage-gated potassium channels assembled from KCNA1, KCNA4 and KCNAB1. It slows down channel inactivation by precluding channel closure mediated by the KCNAB1 subunit. Ligand for ADAM22 that positively regulates synaptic transmission mediated by AMPA-type glutamate receptors (By similarity). Plays a role in suppressing the production of MMP1/3 through the phosphatidylinositol 3-kinase/ERK pathway. May play a role in the control of neuroblastoma cell survival.

Cellular Location

Secreted. Synapse {ECO:0000250|UniProtKB:Q8K4Y5}. Cytoplasm {ECO:0000250|UniProtKB:Q9JIA1} [Isoform 2]: Endoplasmic reticulum. Cytoplasm {ECO:0000250|UniProtKB:Q9JIA1}

Tissue Location

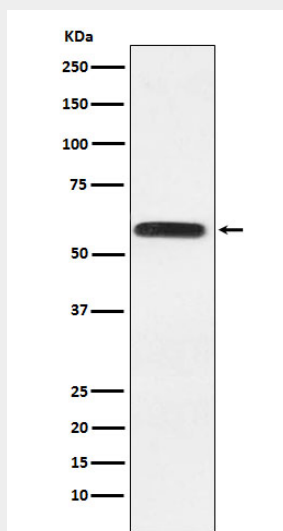
Predominantly expressed in neural tissues, especially in brain. Expression is reduced in low-grade brain tumors and significantly reduced or absent in malignant gliomas [Isoform 3]: Abundantly expressed in the occipital cortex and weakly expressed in the hippocampus (at protein level)

Anti-Lgi1 Rabbit Monoclonal Antibody - Protocols

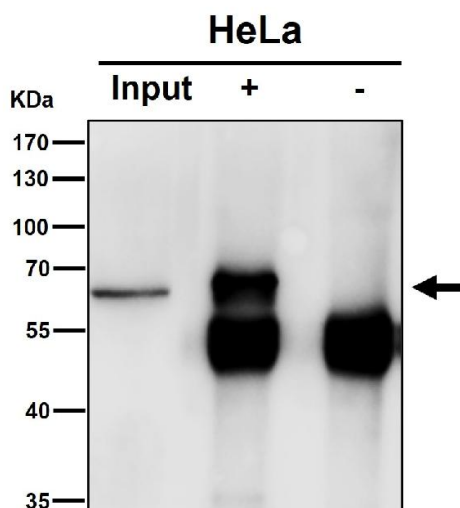
Provided below are standard protocols that you may find useful for product applications.

- [Western Blot](#)
- [Blocking Peptides](#)
- [Dot Blot](#)
- [Immunohistochemistry](#)
- [Immunofluorescence](#)
- [Immunoprecipitation](#)
- [Flow Cytometry](#)
- [Cell Culture](#)

Anti-Lgi1 Rabbit Monoclonal Antibody - Images



Western blot analysis of Lgi1 expression in HeLa cell lysate.



Immunoprecipitate (IP) analysis using the Antibody at 1:50 dilution. (wb at 1:3K dilution)