

**Anti-Gemin 2 Rabbit Monoclonal Antibody**  
**Catalog # ABO15993****Specification**

---

**Anti-Gemin 2 Rabbit Monoclonal Antibody - Product Information**

Application	WB, IP
Primary Accession	<a href="#">O14893</a>
Host	Rabbit
Isotype	IgG
Reactivity	Rat, Human, Mouse
Clonality	Monoclonal
Format	Liquid

**Description**

Anti-Gemin 2 Rabbit Monoclonal Antibody . Tested in WB, IP applications. This antibody reacts with Human, Mouse, Rat.

**Anti-Gemin 2 Rabbit Monoclonal Antibody - Additional Information**

**Gene ID** 8487

**Other Names**

Gem-associated protein 2, Gemin-2, Component of gems 2, Survival of motor neuron protein-interacting protein 1, SMN-interacting protein 1, GEMIN2 ([http://www.genenames.org/cgi-bin/gene\\_symbol\\_report?hgnc\\_id=10884](http://www.genenames.org/cgi-bin/gene_symbol_report?hgnc_id=10884)), SIP1

**Calculated MW**

31 kDa KDa

**Application Details**

WB 1:500-1:2000<br>IP 1:50

**Contents**

Rabbit IgG in phosphate buffered saline, pH 7.4, 150mM NaCl, 0.02% sodium azide and 50% glycerol, 0.4-0.5mg/ml BSA.

**Immunogen**

A synthesized peptide derived from human Gemin 2

**Purification**

Affinity-chromatography

Storage

**Store at -20°C for one year. For short term storage and frequent use, store at 4°C for up to one month. Avoid repeated freeze-thaw cycles.**

**Anti-Gemin 2 Rabbit Monoclonal Antibody - Protein Information**

**Name** GEMIN2 ([HGNC:10884](#))

**Synonyms** SIP1

### Function

The SMN complex catalyzes the assembly of small nuclear ribonucleoproteins (snRNPs), the building blocks of the spliceosome, and thereby plays an important role in the splicing of cellular pre- mRNAs (PubMed:[18984161](http://www.uniprot.org/citations/18984161)</a>, PubMed:[9323129](http://www.uniprot.org/citations/9323129)</a>). Most spliceosomal snRNPs contain a common set of Sm proteins SNRNPB, SNRPD1, SNRPD2, SNRPD3, SNRPE, SNRPF and SNRPG that assemble in a heptameric protein ring on the Sm site of the small nuclear RNA to form the core snRNP (Sm core) (PubMed:[18984161](http://www.uniprot.org/citations/18984161)</a>). In the cytosol, the Sm proteins SNRPD1, SNRPD2, SNRPE, SNRPF and SNRPG (5Sm) are trapped in an inactive 6S pICln-Sm complex by the chaperone CLNS1A that controls the assembly of the core snRNP (PubMed:[18984161](http://www.uniprot.org/citations/18984161)</a>). To assemble core snRNPs, the SMN complex accepts the trapped 5Sm proteins from CLNS1A (PubMed:[18984161](http://www.uniprot.org/citations/18984161)</a>, PubMed:[9323129](http://www.uniprot.org/citations/9323129)</a>). Binding of snRNA inside 5Sm ultimately triggers eviction of the SMN complex, thereby allowing binding of SNRPD3 and SNRNPB to complete assembly of the core snRNP (PubMed:[31799625](http://www.uniprot.org/citations/31799625)</a>). Within the SMN complex, GEMIN2 constrains the conformation of 5Sm, thereby promoting 5Sm binding to snRNA containing the snRNP code (a nonameric Sm site and a 3'-adjacent stem-loop), thus preventing progression of assembly until a cognate substrate is bound (PubMed:[16314521](http://www.uniprot.org/citations/16314521)</a>, PubMed:[21816274](http://www.uniprot.org/citations/21816274)</a>, PubMed:[31799625](http://www.uniprot.org/citations/31799625)</a>).

### Cellular Location

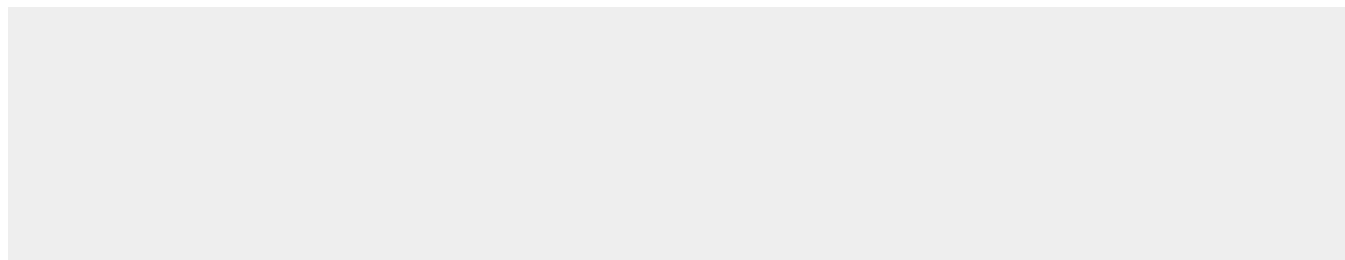
Nucleus, gem. Cytoplasm. Note=Localized in subnuclear structures next to coiled bodies, called gems, which are highly enriched in spliceosomal snRNPs. Also found in the cytoplasm

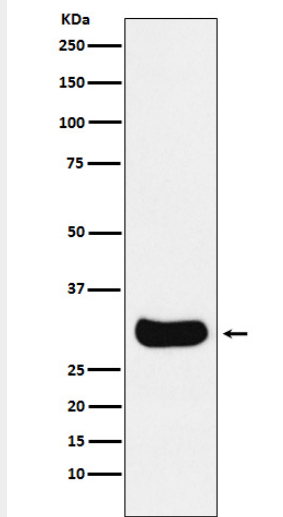
### Anti-Gemin 2 Rabbit Monoclonal Antibody - Protocols

Provided below are standard protocols that you may find useful for product applications.

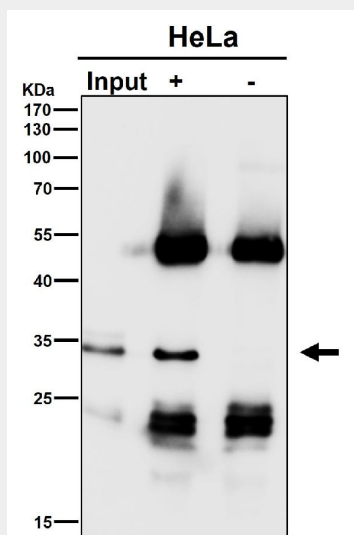
- [Western Blot](#)
- [Blocking Peptides](#)
- [Dot Blot](#)
- [Immunohistochemistry](#)
- [Immunofluorescence](#)
- [Immunoprecipitation](#)
- [Flow Cytometry](#)
- [Cell Culture](#)

### Anti-Gemin 2 Rabbit Monoclonal Antibody - Images





Western blot analysis of Gemin 2 expression in HepG2 cell lysate.



Immunoprecipitate (IP) analysis using the Antibody at 1:50 dilution. (wb at 1:3K dilution)