

**Anti-IL32 Rabbit Monoclonal Antibody**  
**Catalog # ABO15997****Specification**

---

**Anti-IL32 Rabbit Monoclonal Antibody - Product Information**

|                   |                        |
|-------------------|------------------------|
| Application       | WB                     |
| Primary Accession | <a href="#">P24001</a> |
| Host              | Rabbit                 |
| Isotype           | IgG                    |
| Reactivity        | Human                  |
| Clonality         | Monoclonal             |
| Format            | Liquid                 |

**Description**

Anti-IL32 Rabbit Monoclonal Antibody . Tested in WB application. This antibody reacts with Human.

**Anti-IL32 Rabbit Monoclonal Antibody - Additional Information**

**Gene ID** 9235

**Other Names**

Interleukin-32, IL-32, Natural killer cells protein 4, Tumor necrosis factor alpha-inducing factor, IL32, NK4, TAIF

**Calculated MW**

23 kDa KDa

**Application Details**

WB 1:500-1:2000

**Contents**

Rabbit IgG in phosphate buffered saline, pH 7.4, 150mM NaCl, 0.02% sodium azide and 50% glycerol, 0.4-0.5mg/ml BSA.

**Immunogen**

A synthesized peptide derived from human IL32

**Purification**

Affinity-chromatography

**Storage**

**Store at -20°C for one year. For short term storage and frequent use, store at 4°C for up to one month. Avoid repeated freeze-thaw cycles.**

**Anti-IL32 Rabbit Monoclonal Antibody - Protein Information**

**Name** IL32

**Synonyms** NK4, TAIF

**Function**

Cytokine that may play a role in innate and adaptive immune responses. It induces various cytokines such as TNFA/TNF-alpha and IL8. It activates typical cytokine signal pathways of NF-kappa-B and p38 MAPK.

**Cellular Location**

Secreted.

**Tissue Location**

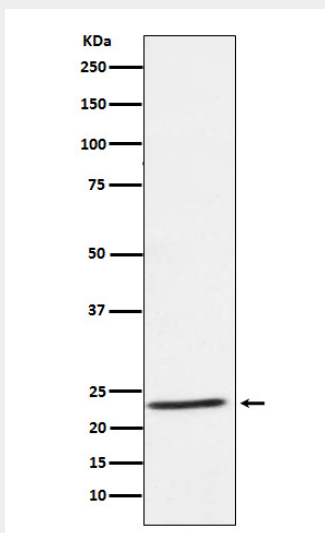
Selectively expressed in lymphocytes. Expression is more prominent in immune cells than in non-immune cells

**Anti-IL32 Rabbit Monoclonal Antibody - Protocols**

Provided below are standard protocols that you may find useful for product applications.

- [Western Blot](#)
- [Blocking Peptides](#)
- [Dot Blot](#)
- [Immunohistochemistry](#)
- [Immunofluorescence](#)
- [Immunoprecipitation](#)
- [Flow Cytometry](#)
- [Cell Culture](#)

**Anti-IL32 Rabbit Monoclonal Antibody - Images**



Western blot analysis of IL32 expression in Human tonsil lysate.