

Anti-GJB1 Rabbit Monoclonal Antibody
Catalog # ABO16027**Specification**

Anti-GJB1 Rabbit Monoclonal Antibody - Product Information

Application	WB, IHC, FC
Primary Accession	P08034
Host	Rabbit
Isotype	IgG
Reactivity	Human
Clonality	Monoclonal
Format	Liquid

Description

Anti-GJB1 Rabbit Monoclonal Antibody . Tested in WB, IHC, Flow Cytometry applications. This antibody reacts with Human.

Anti-GJB1 Rabbit Monoclonal Antibody - Additional Information

Gene ID 2705

Other Names

Gap junction beta-1 protein, Connexin-32, Cx32, GAP junction 28 kDa liver protein, GJB1, CX32

Calculated MW

32 kDa KDa

Application Details

WB 1:500-1:2000
IHC 1:50-1:200
FC 1:50

Contents

Rabbit IgG in phosphate buffered saline, pH 7.4, 150mM NaCl, 0.02% sodium azide and 50% glycerol, 0.4-0.5mg/ml BSA.

Immunogen

A synthesized peptide derived from human GJB1

Purification

Affinity-chromatography

Storage

Store at -20°C for one year. For short term storage and frequent use, store at 4°C for up to one month. Avoid repeated freeze-thaw cycles.

Anti-GJB1 Rabbit Monoclonal Antibody - Protein Information

Name GJB1

Synonyms CX32**Function**

One gap junction consists of a cluster of closely packed pairs of transmembrane channels, the connexons, through which materials of low MW diffuse from one cell to a neighboring cell.

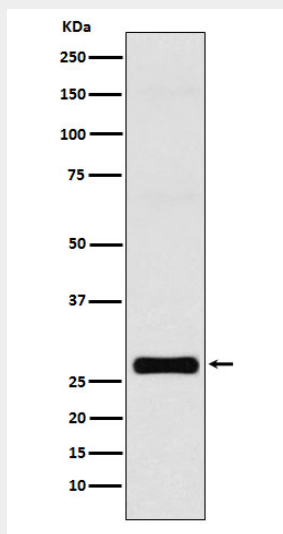
Cellular Location

Cell membrane; Multi-pass membrane protein. Cell junction, gap junction

Anti-GJB1 Rabbit Monoclonal Antibody - Protocols

Provided below are standard protocols that you may find useful for product applications.

- [Western Blot](#)
- [Blocking Peptides](#)
- [Dot Blot](#)
- [Immunohistochemistry](#)
- [Immunofluorescence](#)
- [Immunoprecipitation](#)
- [Flow Cytometry](#)
- [Cell Culture](#)

Anti-GJB1 Rabbit Monoclonal Antibody - Images

Western blot analysis of GJB1 expression in MCF-7 cell lysate.