

**Anti-COL11A1 Rabbit Monoclonal Antibody**  
**Catalog # ABO16029****Specification**

---

**Anti-COL11A1 Rabbit Monoclonal Antibody - Product Information**

Application	WB
Primary Accession	<a href="#">P12107</a>
Host	Rabbit
Isotype	IgG
Reactivity	Human
Clonality	Monoclonal
Format	Liquid

**Description**

Anti-COL11A1 Rabbit Monoclonal Antibody . Tested in WB application. This antibody reacts with Human.

**Anti-COL11A1 Rabbit Monoclonal Antibody - Additional Information**

**Gene ID** 1301

**Other Names**

Collagen alpha-1(XI) chain, COL11A1, COLL6

**Calculated MW**

150 kDa KDa

**Application Details**

WB 1:500-1:2000

**Contents**

Rabbit IgG in phosphate buffered saline, pH 7.4, 150mM NaCl, 0.02% sodium azide and 50% glycerol, 0.4-0.5mg/ml BSA.

**Immunogen**

A synthesized peptide derived from human COL11A1

**Purification**

Affinity-chromatography

**Storage**

**Store at -20°C for one year. For short term storage and frequent use, store at 4°C for up to one month. Avoid repeated freeze-thaw cycles.**

**Anti-COL11A1 Rabbit Monoclonal Antibody - Protein Information**

**Name** COL11A1

**Synonyms** COLL6**Function**

May play an important role in fibrillogenesis by controlling lateral growth of collagen II fibrils.

**Cellular Location**

Secreted, extracellular space, extracellular matrix {ECO:0000255|PROSITE-ProRule:PRU00793}

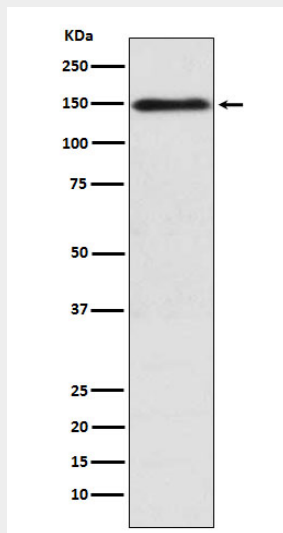
**Tissue Location**

Cartilage, placenta and some tumor or virally transformed cell lines. Isoforms using exon IIA or IIB are found in the cartilage while isoforms using only exon IIB are found in the tendon

**Anti-COL11A1 Rabbit Monoclonal Antibody - Protocols**

Provided below are standard protocols that you may find useful for product applications.

- [Western Blot](#)
- [Blocking Peptides](#)
- [Dot Blot](#)
- [Immunohistochemistry](#)
- [Immunofluorescence](#)
- [Immunoprecipitation](#)
- [Flow Cytometry](#)
- [Cell Culture](#)

**Anti-COL11A1 Rabbit Monoclonal Antibody - Images**

Western blot analysis of COL11A1 expression in K562 cell lysate.