

Anti-ATP4B Rabbit Monoclonal Antibody
Catalog # ABO16032**Specification**

Anti-ATP4B Rabbit Monoclonal Antibody - Product Information

Application	WB
Primary Accession	P51164
Host	Rabbit
Isotype	IgG
Reactivity	Human
Clonality	Monoclonal
Format	Liquid

Description

Anti-ATP4B Rabbit Monoclonal Antibody . Tested in WB application. This antibody reacts with Human.

Anti-ATP4B Rabbit Monoclonal Antibody - Additional Information

Gene ID 496

Other Names

Potassium-transporting ATPase subunit beta, Gastric H(+)/K(+) ATPase subunit beta, Proton pump beta chain, ATP4B (HGNC:820)

Calculated MW

55 kDa KDa

Application Details

WB 1:500-1:2000

Contents

Rabbit IgG in phosphate buffered saline, pH 7.4, 150mM NaCl, 0.02% sodium azide and 50% glycerol, 0.4-0.5mg/ml BSA.

Immunogen

A synthesized peptide derived from human ATP4B

Purification

Affinity-chromatography

Storage

Store at -20°C for one year. For short term storage and frequent use, store at 4°C for up to one month. Avoid repeated freeze-thaw cycles.

Anti-ATP4B Rabbit Monoclonal Antibody - Protein Information

Name ATP4B ([HGNC:820](#))

Function

The beta subunit of the gastric H(+)/K(+) ATPase pump which transports H(+) ions in exchange for K(+) ions across the apical membrane of parietal cells. Plays a structural and regulatory role in the assembly and membrane targeting of a functionally active pump (By similarity). Within a transport cycle, the transfer of a H(+) ion across the membrane is coupled to ATP hydrolysis and is associated with a transient phosphorylation of the alpha subunit that shifts the pump conformation from inward-facing (E1) to outward-facing state (E2). Interacts with the phosphorylation domain of the alpha subunit and functions as a ratchet, stabilizing the lumenal-open E2 conformation and preventing the reverse reaction of the transport cycle (By similarity).

Cellular Location

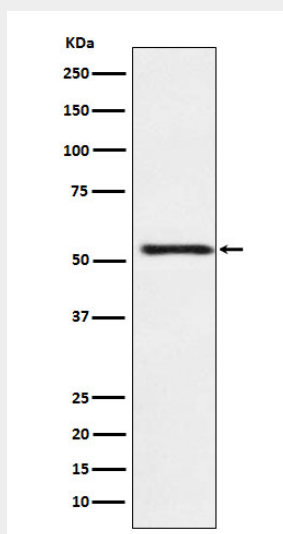
Apical cell membrane {ECO:0000250|UniProtKB:P20648}; Single-pass type II membrane protein.
Cell membrane {ECO:0000250|UniProtKB:P18597}; Single- pass type II membrane protein.
Note=Localized in the apical canalicular membrane of parietal cells
{ECO:0000250|UniProtKB:P20648}

Anti-ATP4B Rabbit Monoclonal Antibody - Protocols

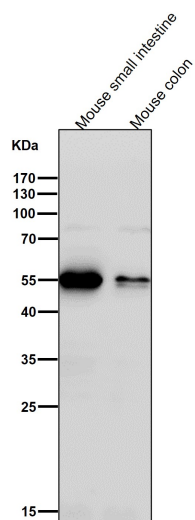
Provided below are standard protocols that you may find useful for product applications.

- [Western Blot](#)
- [Blocking Peptides](#)
- [Dot Blot](#)
- [Immunohistochemistry](#)
- [Immunofluorescence](#)
- [Immunoprecipitation](#)
- [Flow Cytometry](#)
- [Cell Culture](#)

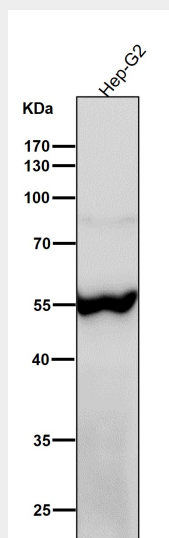
Anti-ATP4B Rabbit Monoclonal Antibody - Images



Western blot analysis of ATP4B expression in HepG2 cell lysate.



All lanes use the Antibody at 1:1K dilution for 1 hour at room temperature.



All lanes use the Antibody at 1:1K dilution for 1 hour at room temperature.