

## Anti-mGluR3 Rabbit Monoclonal Antibody Catalog # ABO16034

### Specification

---

#### Anti-mGluR3 Rabbit Monoclonal Antibody - Product Information

Application	WB
Primary Accession	<a href="#">Q14832</a>
Host	Rabbit
Isotype	IgG
Reactivity	Rat, Human, Mouse
Clonality	Monoclonal
Format	Liquid

#### Description

Anti-mGluR3 Rabbit Monoclonal Antibody . Tested in WB application. This antibody reacts with Human, Mouse, Rat.

#### Anti-mGluR3 Rabbit Monoclonal Antibody - Additional Information

**Gene ID** 2913

#### Other Names

Metabotropic glutamate receptor 3, mGluR3, GRM3, GPRC1C, MGLUR3

#### Calculated MW

330 kDa KDa

#### Application Details

WB 1:500-1:2000

#### Contents

Rabbit IgG in phosphate buffered saline, pH 7.4, 150mM NaCl, 0.02% sodium azide and 50% glycerol, 0.4-0.5mg/ml BSA.

#### Immunogen

A synthesized peptide derived from human mGluR3

#### Purification

Affinity-chromatography

Storage

**Store at -20°C for one year. For short term storage and frequent use, store at 4°C for up to one month. Avoid repeated freeze-thaw cycles.**

#### Anti-mGluR3 Rabbit Monoclonal Antibody - Protein Information

**Name** GRM3

## Synonyms GPRC1C, MGLUR3

### Function

G-protein coupled receptor for glutamate. Ligand binding causes a conformation change that triggers signaling via guanine nucleotide-binding proteins (G proteins) and modulates the activity of down-stream effectors. Signaling inhibits adenylate cyclase activity.

### Cellular Location

Cell membrane; Multi-pass membrane protein

### Tissue Location

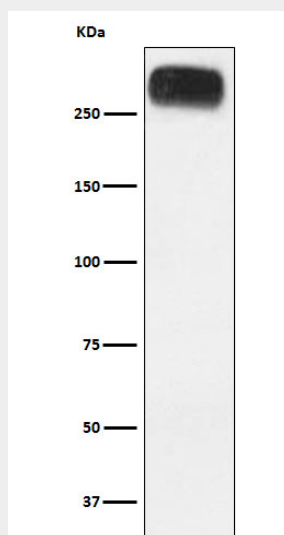
Detected in brain cortex, thalamus, subthalamic nucleus, substantia nigra, hypothalamus, hippocampus, corpus callosum, caudate nucleus and amygdala.

## Anti-mGluR3 Rabbit Monoclonal Antibody - Protocols

Provided below are standard protocols that you may find useful for product applications.

- [Western Blot](#)
- [Blocking Peptides](#)
- [Dot Blot](#)
- [Immunohistochemistry](#)
- [Immunofluorescence](#)
- [Immunoprecipitation](#)
- [Flow Cytometry](#)
- [Cell Culture](#)

## Anti-mGluR3 Rabbit Monoclonal Antibody - Images



Western blot analysis of mGluR3 expression in Human cerebellum lysate.