

Anti-Complement factor B Rabbit Monoclonal Antibody
Catalog # ABO16037**Specification**

Anti-Complement factor B Rabbit Monoclonal Antibody - Product Information

Application	WB
Primary Accession	P00751
Host	Rabbit
Isotype	IgG
Reactivity	Human
Clonality	Monoclonal
Format	Liquid

Description

Anti-Complement factor B Rabbit Monoclonal Antibody . Tested in WB application. This antibody reacts with Human.

Anti-Complement factor B Rabbit Monoclonal Antibody - Additional Information

Gene ID 629

Other Names

Complement factor B, 3.4.21.47, C3/C5 convertase, Glycine-rich beta glycoprotein, GBG, PBF2, Properdin factor B, Complement factor B Ba fragment, Complement factor B Bb fragment, CFB, BF, BFD

Calculated MW

100 kDa KDa

Application Details

WB 1:500-1:2000

Contents

Rabbit IgG in phosphate buffered saline, pH 7.4, 150mM NaCl, 0.02% sodium azide and 50% glycerol, 0.4-0.5mg/ml BSA.

Immunogen

A synthesized peptide derived from human Complement factor B

Purification

Affinity-chromatography

Storage

Store at -20°C for one year. For short term storage and frequent use, store at 4°C for up to one month. Avoid repeated freeze-thaw cycles.

Anti-Complement factor B Rabbit Monoclonal Antibody - Protein Information

Name CFB

Synonyms BF, BFD

Function

Factor B which is part of the alternate pathway of the complement system is cleaved by factor D into 2 fragments: Ba and Bb. Bb, a serine protease, then combines with complement factor 3b to generate the C3 or C5 convertase. It has also been implicated in proliferation and differentiation of preactivated B-lymphocytes, rapid spreading of peripheral blood monocytes, stimulation of lymphocyte blastogenesis and lysis of erythrocytes. Ba inhibits the proliferation of preactivated B-lymphocytes.

Cellular Location

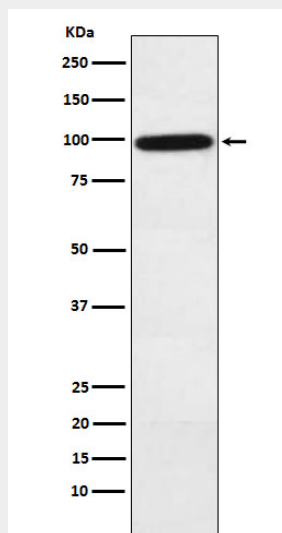
Secreted.

Anti-Complement factor B Rabbit Monoclonal Antibody - Protocols

Provided below are standard protocols that you may find useful for product applications.

- [Western Blot](#)
- [Blocking Peptides](#)
- [Dot Blot](#)
- [Immunohistochemistry](#)
- [Immunofluorescence](#)
- [Immunoprecipitation](#)
- [Flow Cytometry](#)
- [Cell Culture](#)

Anti-Complement factor B Rabbit Monoclonal Antibody - Images



Western blot analysis of Complement factor B expression in Human plasma lysate.