

**Anti-LHX2 Rabbit Monoclonal Antibody**  
**Catalog # ABO16039****Specification**

---

**Anti-LHX2 Rabbit Monoclonal Antibody - Product Information**

Application	WB
Primary Accession	<a href="#">P50458</a>
Host	Rabbit
Isotype	IgG
Reactivity	Rat, Human, Mouse
Clonality	Monoclonal
Format	Liquid

**Description**

Anti-LHX2 Rabbit Monoclonal Antibody . Tested in WB application. This antibody reacts with Human, Mouse, Rat.

**Anti-LHX2 Rabbit Monoclonal Antibody - Additional Information**

**Gene ID** 9355

**Other Names**

LIM/homeobox protein Lhx2, Homeobox protein LH-2, LIM homeobox protein 2, LHX2, LH2

**Calculated MW**

44 kDa KDa

**Application Details**

WB 1:500-1:2000

**Contents**

Rabbit IgG in phosphate buffered saline, pH 7.4, 150mM NaCl, 0.02% sodium azide and 50% glycerol, 0.4-0.5mg/ml BSA.

**Immunogen**

A synthesized peptide derived from human LHX2

**Purification**

Affinity-chromatography

**Storage**

**Store at -20°C for one year. For short term storage and frequent use, store at 4°C for up to one month. Avoid repeated freeze-thaw cycles.**

**Anti-LHX2 Rabbit Monoclonal Antibody - Protein Information**

**Name** LHX2

**Synonyms** LH2**Function**

Acts as a transcriptional activator. Stimulates the promoter of the alpha-glycoprotein gene. Transcriptional regulatory protein involved in the control of cell differentiation in developing lymphoid and neural cell types (By similarity).

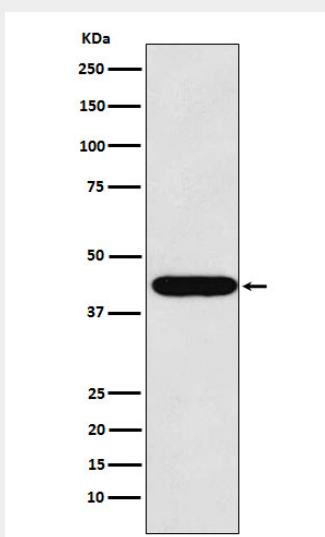
**Cellular Location**

Nucleus.

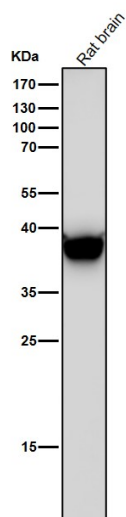
**Anti-LHX2 Rabbit Monoclonal Antibody - Protocols**

Provided below are standard protocols that you may find useful for product applications.

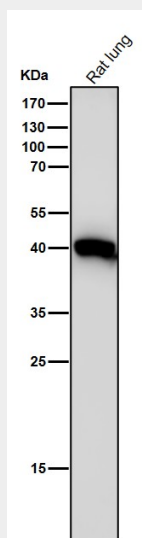
- [Western Blot](#)
- [Blocking Peptides](#)
- [Dot Blot](#)
- [Immunohistochemistry](#)
- [Immunofluorescence](#)
- [Immunoprecipitation](#)
- [Flow Cytometry](#)
- [Cell Culture](#)

**Anti-LHX2 Rabbit Monoclonal Antibody - Images**

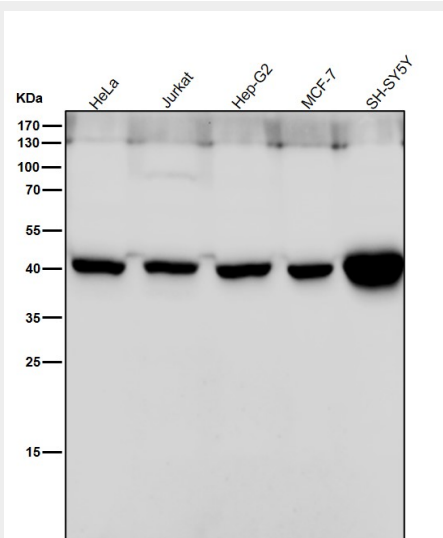
Western blot analysis of LHX2 expression in HeLa cell lysate.



All lanes use the Antibody at 1:2K dilution for 1 hour at room temperature.



All lanes use the Antibody at 1:2K dilution for 1 hour at room temperature.



All lanes use the Antibody at 1:2K dilution for 1 hour at room temperature.