

Anti-CD1c Rabbit Monoclonal Antibody
Catalog # ABO16040**Specification**

Anti-CD1c Rabbit Monoclonal Antibody - Product Information

Application	WB
Primary Accession	P29017
Host	Rabbit
Isotype	IgG
Reactivity	Human
Clonality	Monoclonal
Format	Liquid

Description

Anti-CD1c Rabbit Monoclonal Antibody . Tested in WB application. This antibody reacts with Human.

Anti-CD1c Rabbit Monoclonal Antibody - Additional Information

Gene ID 911

Other Names

T-cell surface glycoprotein CD1c, CD1c, CD1C

Calculated MW

38 kDa KDa

Application Details

WB 1:500-1:2000

Contents

Rabbit IgG in phosphate buffered saline, pH 7.4, 150mM NaCl, 0.02% sodium azide and 50% glycerol, 0.4-0.5mg/ml BSA.

Immunogen

A synthesized peptide derived from human CD1c

Purification

Affinity-chromatography

Storage

Store at -20°C for one year. For short term storage and frequent use, store at 4°C for up to one month. Avoid repeated freeze-thaw cycles.

Anti-CD1c Rabbit Monoclonal Antibody - Protein Information

Name CD1C

Function

Antigen-presenting protein that binds self and non-self lipid and glycolipid antigens and presents them to T-cell receptors on natural killer T-cells.

Cellular Location

Cell membrane; Single-pass type I membrane protein. Endosome membrane; Single-pass type I membrane protein Lysosome. Note=Subject to intracellular trafficking between the cell membrane and endosomes

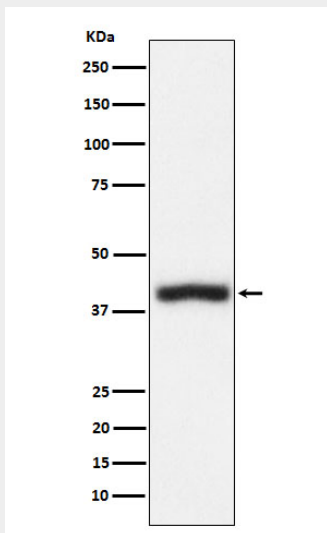
Tissue Location

Expressed on cortical thymocytes, on certain T-cell leukemias, and in various other tissues

Anti-CD1c Rabbit Monoclonal Antibody - Protocols

Provided below are standard protocols that you may find useful for product applications.

- [Western Blot](#)
- [Blocking Peptides](#)
- [Dot Blot](#)
- [Immunohistochemistry](#)
- [Immunofluorescence](#)
- [Immunoprecipitation](#)
- [Flow Cytometry](#)
- [Cell Culture](#)

Anti-CD1c Rabbit Monoclonal Antibody - Images

Western blot analysis of CD1c expression in Jurkat cell lysate.