

Anti-PAG Rabbit Monoclonal Antibody
Catalog # ABO16045**Specification**

Anti-PAG Rabbit Monoclonal Antibody - Product Information

Application	WB, IHC, IP, FC
Primary Accession	Q9NWO8
Host	Rabbit
Isotype	IgG
Reactivity	Rat, Human, Mouse
Clonality	Monoclonal
Format	Liquid

Description

Anti-PAG Rabbit Monoclonal Antibody . Tested in WB, IHC, IP, Flow Cytometry applications. This antibody reacts with Human, Mouse, Rat.

Anti-PAG Rabbit Monoclonal Antibody - Additional Information

Gene ID 55824

Other Names

Phosphoprotein associated with glycosphingolipid-enriched microdomains 1, Csk-binding protein, Transmembrane adapter protein PAG, Transmembrane phosphoprotein Cbp, PAG1, CBP, PAG

Calculated MW

80 kDa KDa

Application Details

WB 1:500-1:2000
IHC 1:50-1:200
IP 1:50
FC 1:100

Contents

Rabbit IgG in phosphate buffered saline, pH 7.4, 150mM NaCl, 0.02% sodium azide and 50% glycerol, 0.4-0.5mg/ml BSA.

Immunogen

A synthesized peptide derived from human PAG

Purification

Affinity-chromatography

Storage

Store at -20°C for one year. For short term storage and frequent use, store at 4°C for up to one month. Avoid repeated freeze-thaw cycles.

Anti-PAG Rabbit Monoclonal Antibody - Protein Information

Name PAG1

Synonyms CBP, PAG

Function

Negatively regulates TCR (T-cell antigen receptor)-mediated signaling in T-cells and FCER1 (high affinity immunoglobulin epsilon receptor)-mediated signaling in mast cells. Promotes CSK activation and recruitment to lipid rafts, which results in LCK inhibition. Inhibits immunological synapse formation by preventing dynamic arrangement of lipid raft proteins. May be involved in cell adhesion signaling.

Cellular Location

Cell membrane; Single-pass type III membrane protein Note=Present in lipid rafts

Tissue Location

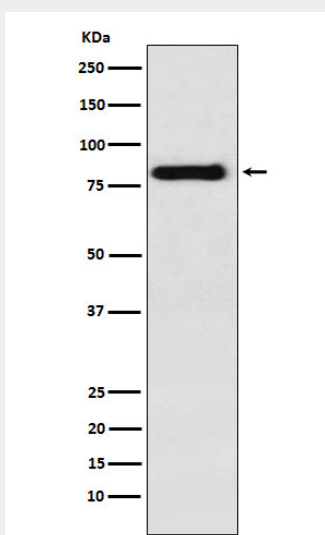
Ubiquitously expressed. Present in germinal center B-cells, plasma cells, T-cells, monocytes and platelets (at protein level).

Anti-PAG Rabbit Monoclonal Antibody - Protocols

Provided below are standard protocols that you may find useful for product applications.

- [Western Blot](#)
- [Blocking Peptides](#)
- [Dot Blot](#)
- [Immunohistochemistry](#)
- [Immunofluorescence](#)
- [Immunoprecipitation](#)
- [Flow Cytometry](#)
- [Cell Culture](#)

Anti-PAG Rabbit Monoclonal Antibody - Images



Western blot analysis of PAG expression in Raji cell lysate.