

Anti-AP1G1 Rabbit Monoclonal Antibody
Catalog # ABO16046**Specification**

Anti-AP1G1 Rabbit Monoclonal Antibody - Product Information

Application	WB, IHC
Primary Accession	O43747
Host	Rabbit
Isotype	IgG
Reactivity	Rat, Human, Mouse
Clonality	Monoclonal
Format	Liquid

Description

Anti-AP1G1 Rabbit Monoclonal Antibody . Tested in WB, IHC applications. This antibody reacts with Human, Mouse, Rat.

Anti-AP1G1 Rabbit Monoclonal Antibody - Additional Information

Gene ID 164

Other Names

AP-1 complex subunit gamma-1, Adaptor protein complex AP-1 subunit gamma-1, Adaptor-related protein complex 1 subunit gamma-1, Clathrin assembly protein complex 1 gamma-1 large chain, Gamma1-adaptin, Golgi adaptor HA1/AP1 adaptin subunit gamma-1, AP1G1, ADTG, CLAPG1

Calculated MW

100 kDa KDa

Application Details

WB 1:500-1:2000
IHC 1:50-1:200

Contents

Rabbit IgG in phosphate buffered saline, pH 7.4, 150mM NaCl, 0.02% sodium azide and 50% glycerol, 0.4-0.5mg/ml BSA.

Immunogen

A synthesized peptide derived from human AP1G1

Purification

Affinity-chromatography

Storage

Store at -20°C for one year. For short term storage and frequent use, store at 4°C for up to one month. Avoid repeated freeze-thaw cycles.

Anti-AP1G1 Rabbit Monoclonal Antibody - Protein Information

Name AP1G1

Synonyms ADTG, CLAPG1

Function

Subunit of clathrin-associated adaptor protein complex 1 that plays a role in protein sorting in the late-Golgi/trans-Golgi network (TGN) and/or endosomes. The AP complexes mediate both the recruitment of clathrin to membranes and the recognition of sorting signals within the cytosolic tails of transmembrane cargo molecules. In association with AFTPH/aftiphilin in the aftiphilin/p200/gamma-synergin complex, involved in the trafficking of transferrin from early to recycling endosomes, and the membrane trafficking of furin and the lysosomal enzyme cathepsin D between the trans-Golgi network (TGN) and endosomes (PubMed:15758025).

Cellular Location

Golgi apparatus. Cytoplasmic vesicle, clathrin-coated vesicle membrane; Peripheral membrane protein; Cytoplasmic side. Cytoplasm Cytoplasm, perinuclear region. Cytoplasmic vesicle, clathrin-coated vesicle. Membrane, clathrin-coated pit. Note=Component of the coat surrounding the cytoplasmic face of coated vesicles located at the Golgi complex (PubMed:12773381). Co-localizes with AFTPH/aftiphilin in the cytoplasm (PubMed:15758025).

Tissue Location

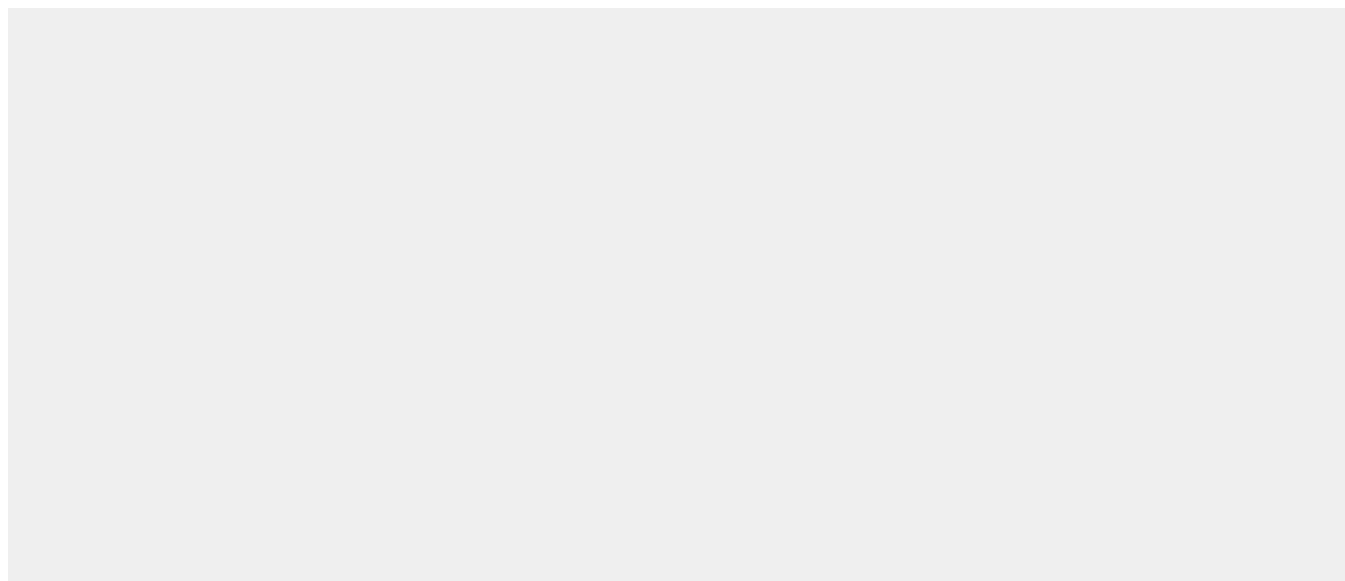
Widely expressed.

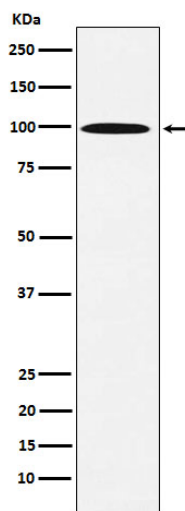
Anti-AP1G1 Rabbit Monoclonal Antibody - Protocols

Provided below are standard protocols that you may find useful for product applications.

- [Western Blot](#)
- [Blocking Peptides](#)
- [Dot Blot](#)
- [Immunohistochemistry](#)
- [Immunofluorescence](#)
- [Immunoprecipitation](#)
- [Flow Cytometry](#)
- [Cell Culture](#)

Anti-AP1G1 Rabbit Monoclonal Antibody - Images





Western blot analysis of AP1G1 expression in 293T cell lysate.