

Anti-CC2D1A Rabbit Monoclonal Antibody
Catalog # ABO16051**Specification**

Anti-CC2D1A Rabbit Monoclonal Antibody - Product Information

Application	WB, IF, ICC, FC
Primary Accession	Q6P1N0
Host	Rabbit
Isotype	IgG
Reactivity	Rat, Human, Mouse
Clonality	Monoclonal
Format	Liquid

Description

Anti-CC2D1A Rabbit Monoclonal Antibody . Tested in WB, ICC/IF, Flow Cytometry applications. This antibody reacts with Human, Mouse, Rat.

Anti-CC2D1A Rabbit Monoclonal Antibody - Additional Information

Gene ID 54862

Other Names

Coiled-coil and C2 domain-containing protein 1A, Akt kinase-interacting protein 1, Five prime repressor element under dual repression-binding protein 1, FRE under dual repression-binding protein 1, Freud-1, Putative NF-kappa-B-activating protein 023N, CC2D1A, AKI1, LGD2 {ECO:0000305}

Calculated MW

130 kDa KDa

Application Details

WB 1:500-1:2000
ICC/IF 1:50-1:200
FC 1:50

Contents

Rabbit IgG in phosphate buffered saline, pH 7.4, 150mM NaCl, 0.02% sodium azide and 50% glycerol, 0.4-0.5mg/ml BSA.

Immunogen

A synthesized peptide derived from human CC2D1A

Purification

Affinity-chromatography

Storage

Store at -20°C for one year. For short term storage and frequent use, store at 4°C for up to one month. Avoid repeated freeze-thaw cycles.

Anti-CC2D1A Rabbit Monoclonal Antibody - Protein Information

Name CC2D1A

Synonyms AKI1, LGD2 {ECO:0000305}

Function

Transcription factor that binds specifically to the DRE (dual repressor element) and represses HTR1A gene transcription in neuronal cells. The combination of calcium and ATP specifically inactivates the binding with FRE. May play a role in the altered regulation of HTR1A associated with anxiety and major depression. Mediates HDAC-independent repression of HTR1A promoter in neuronal cell. Performs essential function in controlling functional maturation of synapses (By similarity). Plays distinct roles depending on its localization. When cytoplasmic, acts as a scaffold protein in the PI3K/PDK1/AKT pathway. Repressor of HTR1A when nuclear. In the centrosome, regulates spindle pole localization of the cohesin subunit SCC1/RAD21, thereby mediating centriole cohesion during mitosis.

Cellular Location

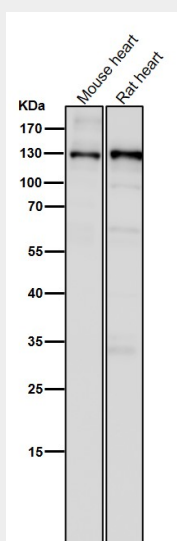
Cytoplasm. Nucleus {ECO:0000250|UniProtKB:Q66HA5}. Cytoplasm, cytoskeleton, microtubule organizing center, centrosome

Anti-CC2D1A Rabbit Monoclonal Antibody - Protocols

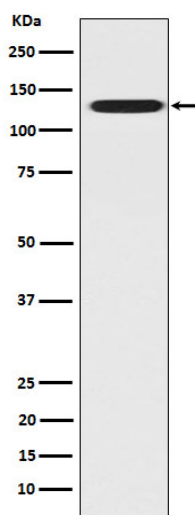
Provided below are standard protocols that you may find useful for product applications.

- [Western Blot](#)
- [Blocking Peptides](#)
- [Dot Blot](#)
- [Immunohistochemistry](#)
- [Immunofluorescence](#)
- [Immunoprecipitation](#)
- [Flow Cytometry](#)
- [Cell Culture](#)

Anti-CC2D1A Rabbit Monoclonal Antibody - Images



All lanes use the Antibody at 1:5K dilution for 1 hour at room temperature.



Western blot analysis of CC2D1A expression in HeLa cell lysate.