

**Anti-UBE2B Rabbit Monoclonal Antibody**  
Catalog # ABO16090

**Specification**

---

**Anti-UBE2B Rabbit Monoclonal Antibody - Product Information**

Application	WB, IHC, IF, ICC
Primary Accession	<a href="#">P63146</a>
Host	Rabbit
Isotype	IgG
Reactivity	Human
Clonality	Monoclonal
Format	Liquid

**Description**

Anti-UBE2B Rabbit Monoclonal Antibody . Tested in WB, IHC, ICC/IF applications. This antibody reacts with Human.

**Anti-UBE2B Rabbit Monoclonal Antibody - Additional Information**

**Gene ID** 7320

**Other Names**

Ubiquitin-conjugating enzyme E2 B, 2.3.2.23, E2 ubiquitin-conjugating enzyme B, RAD6 homolog B, HR6B, hHR6B, Ubiquitin carrier protein B, Ubiquitin-conjugating enzyme E2-17 kDa, Ubiquitin-protein ligase B, UBE2B ([HGNC:12473](http://www.genenames.org/cgi-bin/gene_symbol_report?hgnc_id=12473))

**Calculated MW**

17 kDa KDa

**Application Details**

WB 1:500-1:2000<br>IHC 1:50-1:200<br>ICC/IF 1:50-1:200

**Contents**

Rabbit IgG in phosphate buffered saline, pH 7.4, 150mM NaCl, 0.02% sodium azide and 50% glycerol, 0.4-0.5mg/ml BSA.

**Immunogen**

A synthesized peptide derived from UBE2B

**Purification**

Affinity-chromatography

**Storage**

**Store at -20°C for one year. For short term storage and frequent use, store at 4°C for up to one month. Avoid repeated freeze-thaw cycles.**

**Anti-UBE2B Rabbit Monoclonal Antibody - Protein Information**

**Name** UBE2B ([HGNC:12473](#))**Function**

E2 ubiquitin-conjugating enzyme that accepts ubiquitin from the ubiquitin-activating enzyme E1 and transfers it to a E3 ubiquitin- protein ligase (PubMed:<a href="http://www.uniprot.org/citations/16337599" target="\_blank">16337599</a>, PubMed:<a href="http://www.uniprot.org/citations/17108083" target="\_blank">17108083</a>, PubMed:<a href="http://www.uniprot.org/citations/17130289" target="\_blank">17130289</a>, PubMed:<a href="http://www.uniprot.org/citations/1717990" target="\_blank">1717990</a>, PubMed:<a href="http://www.uniprot.org/citations/20061386" target="\_blank">20061386</a>). In vitro catalyzes 'Lys-11'-, as well as 'Lys-48'- and 'Lys-63'-linked polyubiquitination (PubMed:<a href="http://www.uniprot.org/citations/20061386" target="\_blank">20061386</a>). Together with the E3 enzyme BRE1 (RNF20 and/or RNF40), plays a role in transcription regulation by catalyzing the monoubiquitination of histone H2B at 'Lys-120' to form H2BK120ub1 (PubMed:<a href="http://www.uniprot.org/citations/16337599" target="\_blank">16337599</a>). H2BK120ub1 gives a specific tag for epigenetic transcriptional activation, elongation by RNA polymerase II, telomeric silencing, and is also a prerequisite for H3K4me and H3K79me formation (PubMed:<a href="http://www.uniprot.org/citations/16337599" target="\_blank">16337599</a>). May play a role in DNA repair (PubMed:<a href="http://www.uniprot.org/citations/8062904" target="\_blank">8062904</a>). Associates to the E3 ligase RAD18 to form the UBE2B-RAD18 ubiquitin ligase complex involved in mono-ubiquitination of DNA-associated PCNA on 'Lys-164' (PubMed:<a href="http://www.uniprot.org/citations/17108083" target="\_blank">17108083</a>, PubMed:<a href="http://www.uniprot.org/citations/17130289" target="\_blank">17130289</a>). In association with the E3 enzyme UBR4, is involved in N-end rule-dependent protein degradation (PubMed:<a href="http://www.uniprot.org/citations/38182926" target="\_blank">38182926</a>). May be involved in neurite outgrowth (By similarity).

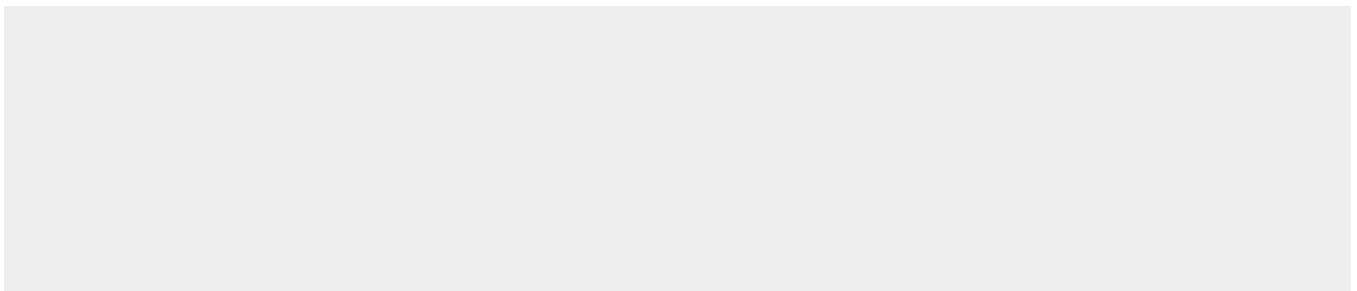
**Cellular Location**

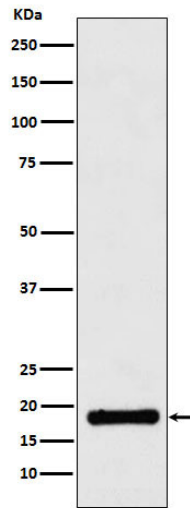
Cell membrane {ECO:0000250|UniProtKB:P63149}. Nucleus {ECO:0000250|UniProtKB:P63149}. Note=In peripheral neurons, expressed both at the plasma membrane and in nuclei {ECO:0000250|UniProtKB:P63149}

**Anti-UBE2B Rabbit Monoclonal Antibody - Protocols**

Provided below are standard protocols that you may find useful for product applications.

- [Western Blot](#)
- [Blocking Peptides](#)
- [Dot Blot](#)
- [Immunohistochemistry](#)
- [Immunofluorescence](#)
- [Immunoprecipitation](#)
- [Flow Cytometry](#)
- [Cell Culture](#)

**Anti-UBE2B Rabbit Monoclonal Antibody - Images**



Western blot analysis of UBE2B expression in Jurkat cell lysate.