

Anti-NCS1 Rabbit Monoclonal Antibody
Catalog # ABO16101**Specification**

Anti-NCS1 Rabbit Monoclonal Antibody - Product Information

Application	WB, IHC, FC
Primary Accession	P62166
Host	Rabbit
Isotype	IgG
Reactivity	Rat, Human, Mouse
Clonality	Monoclonal
Format	Liquid

Description

Anti-NCS1 Rabbit Monoclonal Antibody . Tested in WB, IHC, Flow Cytometry applications. This antibody reacts with Human, Mouse, Rat.

Anti-NCS1 Rabbit Monoclonal Antibody - Additional Information

Gene ID 23413

Other Names

Neuronal calcium sensor 1, NCS-1, Frequenin homolog, Frequenin-like protein, Frequenin-like ubiquitous protein, NCS1, FLUP, FREQ

Calculated MW

22 kDa KDa

Application Details

WB 1:500-1:2000
IHC 1:50-1:200
FC 1:50

Contents

Rabbit IgG in phosphate buffered saline, pH 7.4, 150mM NaCl, 0.02% sodium azide and 50% glycerol, 0.4-0.5mg/ml BSA.

Immunogen

A synthesized peptide derived from human NCS1

Purification

Affinity-chromatography

Storage

Store at -20°C for one year. For short term storage and frequent use, store at 4°C for up to one month. Avoid repeated freeze-thaw cycles.

Anti-NCS1 Rabbit Monoclonal Antibody - Protein Information

Name NCS1

Synonyms FLUP, FREQ

Function

Neuronal calcium sensor, regulator of G protein-coupled receptor phosphorylation in a calcium dependent manner. Directly regulates GRK1 (RHOK), but not GRK2 to GRK5. Can substitute for calmodulin (By similarity). Stimulates PI4KB kinase activity (By similarity). Involved in long-term synaptic plasticity through its interaction with PICK1 (By similarity). May also play a role in neuron differentiation through inhibition of the activity of N-type voltage- gated calcium channel (By similarity).

Cellular Location

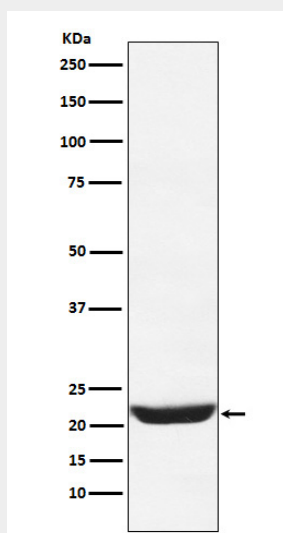
Golgi apparatus. Postsynaptic density. Cytoplasm, perinuclear region. Cytoplasm {ECO:0000250|UniProtKB:P62168}. Cell membrane; Peripheral membrane protein. Membrane {ECO:0000250|UniProtKB:P62168}; Lipid-anchor Note=Associated with Golgi stacks. Post-synaptic densities of dendrites, and in the pre-synaptic nerve terminal at neuromuscular junctions. {ECO:0000305, ECO:0000305|PubMed:17555535}

Anti-NCS1 Rabbit Monoclonal Antibody - Protocols

Provided below are standard protocols that you may find useful for product applications.

- [Western Blot](#)
- [Blocking Peptides](#)
- [Dot Blot](#)
- [Immunohistochemistry](#)
- [Immunofluorescence](#)
- [Immunoprecipitation](#)
- [Flow Cytometry](#)
- [Cell Culture](#)

Anti-NCS1 Rabbit Monoclonal Antibody - Images



Western blot analysis of NCS1 expression in 293T cell lysate.