

**Anti-HDGF Rabbit Monoclonal Antibody**  
**Catalog # ABO16115****Specification**

---

**Anti-HDGF Rabbit Monoclonal Antibody - Product Information**

Application	WB, IHC, IF, ICC, FC
Primary Accession	<a href="#">P51858</a>
Host	Rabbit
Isotype	IgG
Reactivity	Human, Mouse
Clonality	Monoclonal
Format	Liquid

**Description**

Anti-HDGF Rabbit Monoclonal Antibody . Tested in WB, IHC, ICC/IF, Flow Cytometry applications.  
This antibody reacts with Human, Mouse.

**Anti-HDGF Rabbit Monoclonal Antibody - Additional Information**

**Gene ID** 3068

**Other Names**

Hepatoma-derived growth factor, HDGF, High mobility group protein 1-like 2, HMG-1L2, HDGF, HMG1L2

**Calculated MW**

37 kDa KDa

**Application Details**

WB 1:500-1:2000<br>IHC 1:50-1:200<br>ICC/IF 1:50-1:200<br>FC 1:50

**Contents**

Rabbit IgG in phosphate buffered saline, pH 7.4, 150mM NaCl, 0.02% sodium azide and 50% glycerol, 0.4-0.5mg/ml BSA.

**Immunogen**

A synthesized peptide derived from human HDGF

**Purification**

Affinity-chromatography

**Storage**

**Store at -20°C for one year. For short term storage and frequent use, store at 4°C for up to one month. Avoid repeated freeze-thaw cycles.**

**Anti-HDGF Rabbit Monoclonal Antibody - Protein Information**

**Name** HDGF

## Synonyms HMG1L2

### Function

[Isoform 1]: Acts as a transcriptional repressor (PubMed:<a href="http://www.uniprot.org/citations/17974029" target="\_blank">17974029</a>). Has mitogenic activity for fibroblasts (PubMed:<a href="http://www.uniprot.org/citations/11751870" target="\_blank">11751870</a>, PubMed:<a href="http://www.uniprot.org/citations/26845719" target="\_blank">26845719</a>). Heparin-binding protein (PubMed:<a href="http://www.uniprot.org/citations/15491618" target="\_blank">15491618</a>).

### Cellular Location

[Isoform 1]: Nucleus. Cytoplasm. Secreted, extracellular exosome. Note=Secreted by exosomes and is located inside the exosome (PubMed:27926477). May also be secreted as free protein via an as yet unknown pathway (PubMed:27926477) [Isoform 3]: Nucleus. Cytoplasm Secreted, extracellular exosome Note=Secreted by exosomes and is located on the outer exosome surface

### Tissue Location

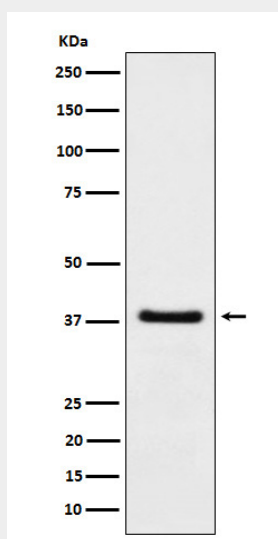
Ubiquitous..

## Anti-HDGF Rabbit Monoclonal Antibody - Protocols

Provided below are standard protocols that you may find useful for product applications.

- [Western Blot](#)
- [Blocking Peptides](#)
- [Dot Blot](#)
- [Immunohistochemistry](#)
- [Immunofluorescence](#)
- [Immunoprecipitation](#)
- [Flow Cytometry](#)
- [Cell Culture](#)

## Anti-HDGF Rabbit Monoclonal Antibody - Images



Western blot analysis of HDGF expression in A549 cell lysate.