

Anti-RGMA Rabbit Monoclonal Antibody
Catalog # ABO16133**Specification**

Anti-RGMA Rabbit Monoclonal Antibody - Product Information

Application	WB, IF, ICC
Primary Accession	Q96B86
Host	Rabbit
Isotype	IgG
Reactivity	Rat, Human, Mouse
Clonality	Monoclonal
Format	Liquid

Description

Anti-RGMA Rabbit Monoclonal Antibody . Tested in WB, ICC/IF applications. This antibody reacts with Human, Mouse, Rat.

Anti-RGMA Rabbit Monoclonal Antibody - Additional Information

Gene ID 56963

Other Names

Repulsive guidance molecule A, RGM domain family member A, RGMA (http://www.genenames.org/cgi-bin/gene_symbol_report?hgnc_id=30308), RGM

Calculated MW

37 kDa KDa

Application Details

WB 1:500-1:2000
ICC/IF 1:50-1:200

Contents

Rabbit IgG in phosphate buffered saline, pH 7.4, 150mM NaCl, 0.02% sodium azide and 50% glycerol, 0.4-0.5mg/ml BSA.

Immunogen

A synthesized peptide derived from human RGMA

Purification

Affinity-chromatography

Storage

Store at -20°C for one year. For short term storage and frequent use, store at 4°C for up to one month. Avoid repeated freeze-thaw cycles.

Anti-RGMA Rabbit Monoclonal Antibody - Protein Information

Name RGMA ([HGNC:30308](#))

Synonyms RGM

Function

Member of the repulsive guidance molecule (RGM) family that performs several functions in the developing and adult nervous system. Regulates cephalic neural tube closure, inhibits neurite outgrowth and cortical neuron branching, and the formation of mature synapses. Binding to its receptor NEO1/neogenin induces activation of RHOA- ROCK1/Rho-kinase signaling pathway through UNC5B-ARHGEF12/LARG- PTK2/FAK1 cascade, leading to collapse of the neuronal growth cone and neurite outgrowth inhibition. Furthermore, RGMA binding to NEO1/neogenin leads to HRAS inactivation by influencing HRAS-PTK2/FAK1- AKT1 pathway. It also functions as a bone morphogenetic protein (BMP) coreceptor that may signal through SMAD1, SMAD5, and SMAD8.

Cellular Location

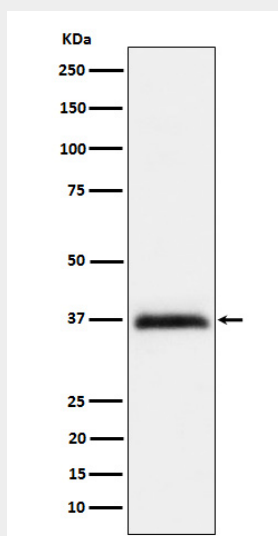
Cell membrane; Lipid-anchor, GPI- anchor

Anti-RGMA Rabbit Monoclonal Antibody - Protocols

Provided below are standard protocols that you may find useful for product applications.

- [Western Blot](#)
- [Blocking Peptides](#)
- [Dot Blot](#)
- [Immunohistochemistry](#)
- [Immunofluorescence](#)
- [Immunoprecipitation](#)
- [Flow Cytometry](#)
- [Cell Culture](#)

Anti-RGMA Rabbit Monoclonal Antibody - Images



Western blot analysis of RGMA expression in HeLa cell lysate.