

**Anti-HLA DMB Rabbit Monoclonal Antibody**  
**Catalog # ABO16142****Specification**

---

**Anti-HLA DMB Rabbit Monoclonal Antibody - Product Information**

Application	WB, FC
Primary Accession	<a href="#">P28068</a>
Host	Rabbit
Isotype	IgG
Reactivity	Human
Clonality	Monoclonal
Format	Liquid

**Description**

Anti-HLA DMB Rabbit Monoclonal Antibody . Tested in WB, Flow Cytometry applications. This antibody reacts with Human.

**Anti-HLA DMB Rabbit Monoclonal Antibody - Additional Information**

**Gene ID** 3109

**Other Names**

HLA class II histocompatibility antigen, DM beta chain, MHC class II antigen DMB, Really interesting new gene 7 protein, HLA-DMB, DMB, RING7

**Calculated MW**

29 kDa KDa

**Application Details**

WB 1:500-1:2000<br>FC 1:50

**Contents**

Rabbit IgG in phosphate buffered saline, pH 7.4, 150mM NaCl, 0.02% sodium azide and 50% glycerol, 0.4-0.5mg/ml BSA.

**Immunogen**

A synthesized peptide derived from human HLA DMB

**Purification**

Affinity-chromatography

**Storage**

**Store at -20°C for one year. For short term storage and frequent use, store at 4°C for up to one month. Avoid repeated freeze-thaw cycles.**

**Anti-HLA DMB Rabbit Monoclonal Antibody - Protein Information**

**Name** HLA-DMB

**Synonyms** DMB, RING7**Function**

Plays a critical role in catalyzing the release of class II- associated invariant chain peptide (CLIP) from newly synthesized MHC class II molecules and freeing the peptide binding site for acquisition of antigenic peptides. In B-cells, the interaction between HLA-DM and MHC class II molecules is regulated by HLA-DO.

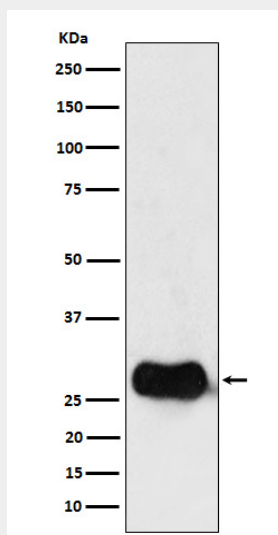
**Cellular Location**

Late endosome membrane; Single-pass type I membrane protein. Lysosome membrane; Single-pass type I membrane protein. Note=Localizes to late endocytic compartment. Associates with lysosome membranes

**Anti-HLA DMB Rabbit Monoclonal Antibody - Protocols**

Provided below are standard protocols that you may find useful for product applications.

- [Western Blot](#)
- [Blocking Peptides](#)
- [Dot Blot](#)
- [Immunohistochemistry](#)
- [Immunofluorescence](#)
- [Immunoprecipitation](#)
- [Flow Cytometry](#)
- [Cell Culture](#)

**Anti-HLA DMB Rabbit Monoclonal Antibody - Images**

Western blot analysis of HLA DMB expression in Raji cell lysate.