

**Anti-TUB1 Rabbit Monoclonal Antibody**  
**Catalog # ABO16143****Specification**

---

**Anti-TUB1 Rabbit Monoclonal Antibody - Product Information**

Application	WB, IHC
Primary Accession	<a href="#">P50607</a>
Host	Rabbit
Isotype	IgG
Reactivity	Rat, Human, Mouse
Clonality	Monoclonal
Format	Liquid

**Description**

Anti-TUB1 Rabbit Monoclonal Antibody . Tested in WB, IHC applications. This antibody reacts with Human, Mouse, Rat.

**Anti-TUB1 Rabbit Monoclonal Antibody - Additional Information**

**Gene ID** 7275

**Other Names**

Tubby protein homolog, TUB

**Calculated MW**

55 kDa KDa

**Application Details**

WB 1:500-1:2000<br>IHC 1:50-1:200

**Contents**

Rabbit IgG in phosphate buffered saline, pH 7.4, 150mM NaCl, 0.02% sodium azide and 50% glycerol, 0.4-0.5mg/ml BSA.

**Immunogen**

A synthesized peptide derived from human TUB1

**Purification**

Affinity-chromatography

Storage

**Store at -20°C for one year. For short term storage and frequent use, store at 4°C for up to one month. Avoid repeated freeze-thaw cycles.**

**Anti-TUB1 Rabbit Monoclonal Antibody - Protein Information**

**Name** TUB

**Function**

Functions in signal transduction from heterotrimeric G protein-coupled receptors. Binds to membranes containing phosphatidylinositol 4,5-bisphosphate. Can bind DNA (in vitro). May contribute to the regulation of transcription in the nucleus. Could be involved in the hypothalamic regulation of body weight (By similarity). Contribute to stimulation of phagocytosis of apoptotic retinal pigment epithelium (RPE) cells and macrophages.

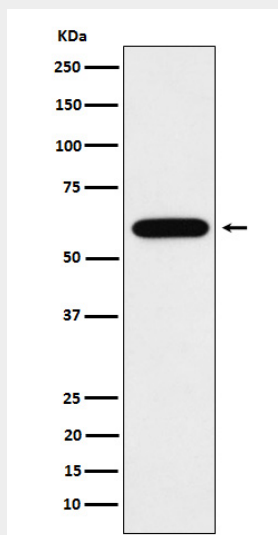
**Cellular Location**

Cytoplasm. Nucleus. Secreted. Cell membrane; Peripheral membrane protein; Cytoplasmic side  
Note=Binds phospholipid and is anchored to the plasma membrane through binding phosphatidylinositol 4,5-bisphosphate. Is released upon activation of phospholipase C. Translocates from the plasma membrane to the nucleus upon activation of guanine nucleotide-binding protein G(q) subunit alpha. Does not have a cleavable signal peptide and is secreted by a non-conventional pathway (By similarity).

**Anti-TUB1 Rabbit Monoclonal Antibody - Protocols**

Provided below are standard protocols that you may find useful for product applications.

- [Western Blot](#)
- [Blocking Peptides](#)
- [Dot Blot](#)
- [Immunohistochemistry](#)
- [Immunofluorescence](#)
- [Immunoprecipitation](#)
- [Flow Cytometry](#)
- [Cell Culture](#)

**Anti-TUB1 Rabbit Monoclonal Antibody - Images**

Western blot analysis of TUB1 expression in Neuro-2a cell lysate.