

**Anti-LTB4R Rabbit Monoclonal Antibody**  
Catalog # ABO16144

**Specification**

---

**Anti-LTB4R Rabbit Monoclonal Antibody - Product Information**

Application	WB, IHC
Primary Accession	<a href="#">Q15722</a>
Host	Rabbit
Isotype	IgG
Reactivity	Human
Clonality	Monoclonal
Format	Liquid

**Description**

Anti-LTB4R Rabbit Monoclonal Antibody . Tested in WB, IHC applications. This antibody reacts with Human.

**Anti-LTB4R Rabbit Monoclonal Antibody - Additional Information**

**Gene ID** 1241

**Other Names**

Leukotriene B4 receptor 1, LTB4-R 1, LTB4-R1, Chemoattractant receptor-like 1, G-protein coupled receptor 16, P2Y purinoceptor 7, P2Y7, LTB4R, BLT, BLT1, BLTR, CMKRL1, GPR16, P2RY7

**Calculated MW**

38 kDa KDa

**Application Details**

WB 1:500-1:2000<br>IHC 1:50-1:200

**Contents**

Rabbit IgG in phosphate buffered saline, pH 7.4, 150mM NaCl, 0.02% sodium azide and 50% glycerol, 0.4-0.5mg/ml BSA.

**Immunogen**

A synthesized peptide derived from human LTB4R

**Purification**

Affinity-chromatography

**Storage**

**Store at -20°C for one year. For short term storage and frequent use, store at 4°C for up to one month. Avoid repeated freeze-thaw cycles.**

**Anti-LTB4R Rabbit Monoclonal Antibody - Protein Information**

**Name** LTB4R

**Synonyms** BLT, BLT1, BLTR, CMKRL1, GPR16, P2RY7

**Function**

Receptor for extracellular ATP > UTP and ADP. The activity of this receptor is mediated by G proteins which activate a phosphatidylinositol-calcium second messenger system. May be the cardiac P2Y receptor involved in the regulation of cardiac muscle contraction through modulation of L-type calcium currents. Is a receptor for leukotriene B4, a potent chemoattractant involved in inflammation and immune response.

**Cellular Location**

Cell membrane; Multi-pass membrane protein.

**Tissue Location**

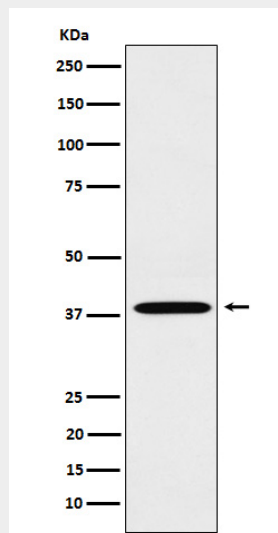
Expressed at highest levels in heart, skeletal muscle and at lower levels in brain and liver. High level of expression in lymphoid tissues

**Anti-LTB4R Rabbit Monoclonal Antibody - Protocols**

Provided below are standard protocols that you may find useful for product applications.

- [Western Blot](#)
- [Blocking Peptides](#)
- [Dot Blot](#)
- [Immunohistochemistry](#)
- [Immunofluorescence](#)
- [Immunoprecipitation](#)
- [Flow Cytometry](#)
- [Cell Culture](#)

**Anti-LTB4R Rabbit Monoclonal Antibody - Images**



Western blot analysis of LTB4R expression in A549 cell lysate.