

**Anti-ACAT2 Rabbit Monoclonal Antibody**  
**Catalog # ABO16147****Specification**

---

**Anti-ACAT2 Rabbit Monoclonal Antibody - Product Information**

Application	WB, IHC
Primary Accession	<a href="#">Q9BWD1</a>
Host	Rabbit
Isotype	IgG
Reactivity	Rat, Human, Mouse
Clonality	Monoclonal
Format	Liquid

**Description**

Anti-ACAT2 Rabbit Monoclonal Antibody . Tested in WB, IHC applications. This antibody reacts with Human, Mouse, Rat.

**Anti-ACAT2 Rabbit Monoclonal Antibody - Additional Information**

**Gene ID** 39

**Other Names**

Acetyl-CoA acetyltransferase, cytosolic, 2.3.1.9 {ECO:0000255|PROSITE-ProRule:PRU10020, ECO:0000269|PubMed:7911016}, Acetyl-CoA transferase-like protein, Cytosolic acetoacetyl-CoA thiolase, ACAT2, ACTL

**Calculated MW**

38 kDa KDa

**Application Details**

WB 1:500-1:2000<br>IHC 1:50-1:200

**Contents**

Rabbit IgG in phosphate buffered saline, pH 7.4, 150mM NaCl, 0.02% sodium azide and 50% glycerol, 0.4-0.5mg/ml BSA.

**Immunogen**

A synthesized peptide derived from human ACAT2

**Purification**

Affinity-chromatography

**Storage**

**Store at -20°C for one year. For short term storage and frequent use, store at 4°C for up to one month. Avoid repeated freeze-thaw cycles.**

**Anti-ACAT2 Rabbit Monoclonal Antibody - Protein Information**

**Name** ACAT2

**Synonyms** ACTL

**Function**

Involved in the biosynthetic pathway of cholesterol.

**Cellular Location**

Cytoplasm, cytosol.

**Anti-ACAT2 Rabbit Monoclonal Antibody - Protocols**

Provided below are standard protocols that you may find useful for product applications.

- [Western Blot](#)
- [Blocking Peptides](#)
- [Dot Blot](#)
- [Immunohistochemistry](#)
- [Immunofluorescence](#)
- [Immunoprecipitation](#)
- [Flow Cytometry](#)
- [Cell Culture](#)

**Anti-ACAT2 Rabbit Monoclonal Antibody - Images**

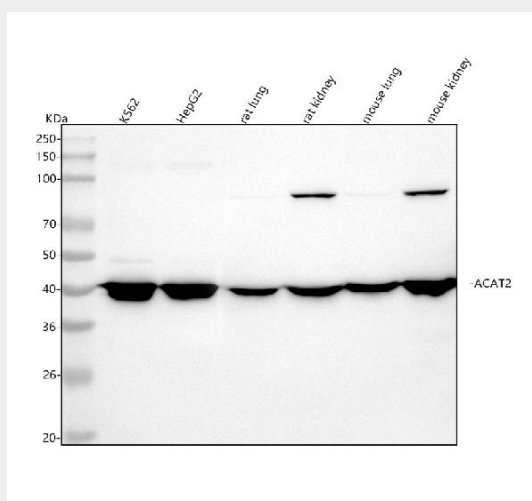


Figure 1. Western blot analysis of ACAT2 using anti-ACAT2 antibody (M03245-2).

Electrophoresis was performed on a 5-20% SDS-PAGE gel at 70V (Stacking gel) / 90V (Resolving gel) for 2-3 hours. The sample well of each lane was loaded with 30 ug of sample under reducing conditions.

Lane 1: human K562 whole cell lysates,  
Lane 2: human HepG2 whole cell lysates,  
Lane 3: rat lung tissue lysates,  
Lane 4: rat kidney tissue lysates,  
Lane 5: mouse lung tissue lysates,  
Lane 6: mouse kidney tissue lysates.

After electrophoresis, proteins were transferred to a nitrocellulose membrane at 150 mA for 50-90 minutes. Blocked the membrane with 5% non-fat milk/TBS for 1.5 hour at RT. The membrane was incubated with rabbit anti-ACAT2 antigen affinity purified monoclonal antibody (Catalog #

M03245-2) at 1:500 overnight at 4°C, then washed with TBS-0.1%Tween 3 times with 5 minutes each and probed with a goat anti-rabbit IgG-HRP secondary antibody at a dilution of 1:5000 for 1.5 hour at RT. The signal is developed using an Enhanced Chemiluminescent detection (ECL) kit (Catalog # EK1002) with Tanon 5200 system. A specific band was detected for ACAT2 at approximately 41 kDa. The expected band size for ACAT2 is at 41 kDa.