

**Anti-SRP19 Rabbit Monoclonal Antibody**  
**Catalog # ABO16157****Specification**

---

**Anti-SRP19 Rabbit Monoclonal Antibody - Product Information**

Application	WB, IHC, IF, ICC
Primary Accession	<a href="#">P09132</a>
Host	Rabbit
Isotype	IgG
Reactivity	Rat, Human, Mouse
Clonality	Monoclonal
Format	Liquid

**Description**

Anti-SRP19 Rabbit Monoclonal Antibody . Tested in WB, IHC, ICC/IF applications. This antibody reacts with Human, Mouse, Rat.

**Anti-SRP19 Rabbit Monoclonal Antibody - Additional Information**

**Gene ID** 6728

**Other Names**

Signal recognition particle 19 kDa protein, SRP19, SRP19

**Calculated MW**

20 kDa KDa

**Application Details**

WB 1:500-1:2000<br>IHC 1:50-1:200<br>ICC/IF 1:50-1:200

**Contents**

Rabbit IgG in phosphate buffered saline, pH 7.4, 150mM NaCl, 0.02% sodium azide and 50% glycerol, 0.4-0.5mg/ml BSA.

**Immunogen**

A synthesized peptide derived from human SRP19

**Purification**

Affinity-chromatography

**Storage**

**Store at -20°C for one year. For short term storage and frequent use, store at 4°C for up to one month. Avoid repeated freeze-thaw cycles.**

**Anti-SRP19 Rabbit Monoclonal Antibody - Protein Information**

**Name** SRP19

**Function**

Component of the signal recognition particle (SRP) complex, a ribonucleoprotein complex that mediates the cotranslational targeting of secretory and membrane proteins to the endoplasmic reticulum (ER) (By similarity). Binds directly to 7SL RNA (By similarity). Mediates binding of SRP54 to the SRP complex (By similarity).

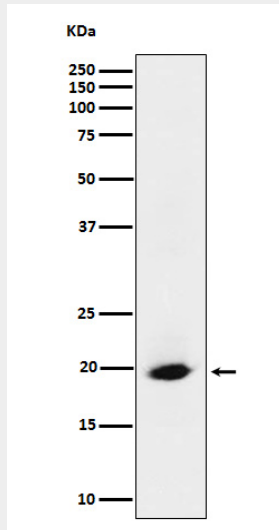
**Cellular Location**

Cytoplasm. Nucleus, nucleolus. Nucleus, nucleoplasm. Note=Although the signal recognition particle complex acts in the cytoplasm, it assembles at least in part in the nucleus and/or the nucleolus. SRP19 nuclear import may be mediated by IPO8/Imp8 and TPNO1/Trn

**Anti-SRP19 Rabbit Monoclonal Antibody - Protocols**

Provided below are standard protocols that you may find useful for product applications.

- [Western Blot](#)
- [Blocking Peptides](#)
- [Dot Blot](#)
- [Immunohistochemistry](#)
- [Immunofluorescence](#)
- [Immunoprecipitation](#)
- [Flow Cytometry](#)
- [Cell Culture](#)

**Anti-SRP19 Rabbit Monoclonal Antibody - Images**

Western blot analysis of SRP19 expression in HeLa cell lysate.