

**Anti-DNPH1 Rabbit Monoclonal Antibody**  
**Catalog # ABO16159****Specification**

---

**Anti-DNPH1 Rabbit Monoclonal Antibody - Product Information**

Application	WB, IHC
Primary Accession	<a href="#">O43598</a>
Host	Rabbit
Isotype	IgG
Reactivity	Human
Clonality	Monoclonal
Format	Liquid

**Description**

Anti-DNPH1 Rabbit Monoclonal Antibody . Tested in WB, IHC applications. This antibody reacts with Human.

**Anti-DNPH1 Rabbit Monoclonal Antibody - Additional Information**

**Gene ID** 10591

**Other Names**

5-hydroxymethyl-dUMP N-hydrolase, 3.2.2.-, 2'-deoxynucleoside 5'-phosphate N-hydrolase 1 {ECO:0000312|HGNC:HGNC:21218}, c-Myc-responsive protein RCL, DNPH1 ([http://www.genenames.org/cgi-bin/gene\\_symbol\\_report?hgnc\\_id=21218](http://www.genenames.org/cgi-bin/gene_symbol_report?hgnc_id=21218))

**Calculated MW**

21 kDa KDa

**Application Details**

WB 1:500-1:2000<br>IHC 1:50-1:200

**Contents**

Rabbit IgG in phosphate buffered saline, pH 7.4, 150mM NaCl, 0.02% sodium azide and 50% glycerol, 0.4-0.5mg/ml BSA.

**Immunogen**

A synthesized peptide derived from human DNPH1

**Purification**

Affinity-chromatography

**Storage**

**Store at -20°C for one year. For short term storage and frequent use, store at 4°C for up to one month. Avoid repeated freeze-thaw cycles.**

**Anti-DNPH1 Rabbit Monoclonal Antibody - Protein Information**

**Name** DNPH1 ([HGNC:21218](#))

### Function

Part of a nucleotide salvage pathway that eliminates epigenetically modified 5-hydroxymethyl-dCMP (hmdCMP) in a two-step process entailing deamination to cytotoxic 5-hydroxymethyl-dUMP (hmdUMP), followed by its hydrolysis into 5-hydroxymethyluracil (hmU) and 2-deoxy-D-ribose 5-phosphate (deoxyribosephosphate) (PubMed:[33833118](http://www.uniprot.org/citations/33833118)). Catalyzes the second step in that pathway, the hydrolysis of the N-glycosidic bond in hmdUMP, degrading this cytotoxic nucleotide to avoid its genomic integration (PubMed:[33833118](http://www.uniprot.org/citations/33833118)).

### Cellular Location

Cytoplasm. Nucleus

### Tissue Location

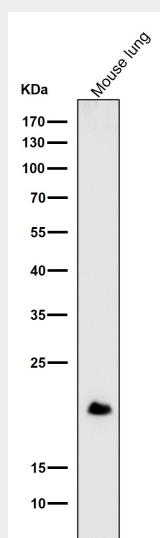
Expressed at low levels in brain, colon, lung, peripheral blood leukocytes, placenta, small intestine, and thymus Expressed at high levels in heart, kidney, liver, skeletal muscle and spleen. Overexpressed in a significant proportion of breast cancers

## Anti-DNPH1 Rabbit Monoclonal Antibody - Protocols

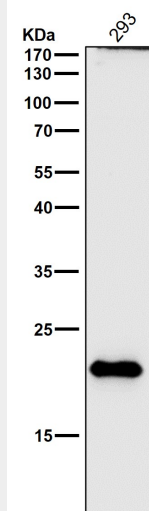
Provided below are standard protocols that you may find useful for product applications.

- [Western Blot](#)
- [Blocking Peptides](#)
- [Dot Blot](#)
- [Immunohistochemistry](#)
- [Immunofluorescence](#)
- [Immunoprecipitation](#)
- [Flow Cytometry](#)
- [Cell Culture](#)

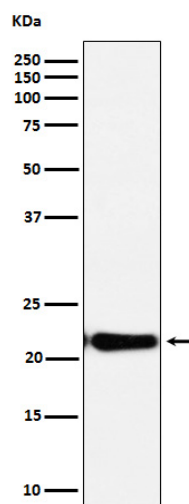
## Anti-DNPH1 Rabbit Monoclonal Antibody - Images



All lanes use the Antibody at 1:1W dilution for 1 hour at room temperature.



All lanes use the Antibody at 1:1W dilution for 1 hour at room temperature.



Western blot analysis of DNPH1 expression in HeLa cell lysate.