

Anti-ORP1 Rabbit Monoclonal Antibody
Catalog # ABO16166**Specification****Anti-ORP1 Rabbit Monoclonal Antibody - Product Information**

Application	WB, IF, ICC, FC
Primary Accession	Q9BXW6
Host	Rabbit
Isotype	IgG
Reactivity	Rat, Human, Mouse
Clonality	Monoclonal
Format	Liquid

Description

Anti-ORP1 Rabbit Monoclonal Antibody . Tested in WB, ICC/IF, Flow Cytometry applications. This antibody reacts with Human, Mouse, Rat.

Anti-ORP1 Rabbit Monoclonal Antibody - Additional Information

Gene ID 114876

Other Names

Oxysterol-binding protein-related protein 1, ORP-1, OSBP-related protein 1, OSBPL1A ([HGNC:16398](http://www.genenames.org/cgi-bin/gene_symbol_report?hgnc_id=16398))

Calculated MW

50,108 kDa KDa

Application Details

WB 1:500-1:2000
ICC/IF 1:50-1:200
FC 1:50

Contents

Rabbit IgG in phosphate buffered saline, pH 7.4, 150mM NaCl, 0.02% sodium azide and 50% glycerol, 0.4-0.5mg/ml BSA.

Immunogen

A synthesized peptide derived from human ORP1

Purification

Affinity-chromatography

Storage

Store at -20°C for one year. For short term storage and frequent use, store at 4°C for up to one month. Avoid repeated freeze-thaw cycles.

Anti-ORP1 Rabbit Monoclonal Antibody - Protein Information

Name OSBPL1A ([HGNC:16398](#))

Function

Binds phospholipids; exhibits strong binding to phosphatidic acid and weak binding to phosphatidylinositol 3-phosphate (By similarity). Stabilizes GTP-bound RAB7A on late endosomes/lysosomes and alters functional properties of late endocytic compartments via its interaction with RAB7A (PubMed:16176980). Binds 25-hydroxycholesterol and cholesterol (PubMed:17428193).

Cellular Location

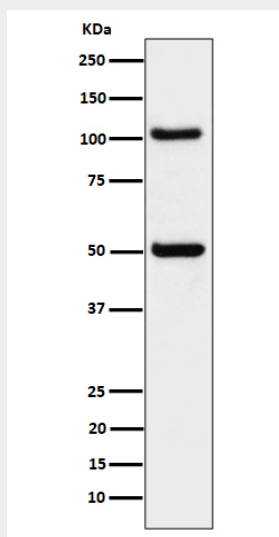
Late endosome. Note=Colocalizes with RAB7A, RAB9A and LAMP1 in late endosomes

Anti-ORP1 Rabbit Monoclonal Antibody - Protocols

Provided below are standard protocols that you may find useful for product applications.

- [Western Blot](#)
- [Blocking Peptides](#)
- [Dot Blot](#)
- [Immunohistochemistry](#)
- [Immunofluorescence](#)
- [Immunoprecipitation](#)
- [Flow Cytometry](#)
- [Cell Culture](#)

Anti-ORP1 Rabbit Monoclonal Antibody - Images



Western blot analysis of ORP1 expression in 293 cell lysate.