

Anti-NCTR2 Rabbit Monoclonal Antibody
Catalog # ABO16170**Specification**

Anti-NCTR2 Rabbit Monoclonal Antibody - Product Information

Application	WB, IF, ICC
Primary Accession	O95944
Host	Rabbit
Isotype	IgG
Reactivity	Human
Clonality	Monoclonal
Format	Liquid

Description

Anti-NCTR2 Rabbit Monoclonal Antibody . Tested in WB, ICC/IF applications. This antibody reacts with Human.

Anti-NCTR2 Rabbit Monoclonal Antibody - Additional Information

Gene ID 9436

Other Names

Natural cytotoxicity triggering receptor 2, Lymphocyte antigen 95 homolog, NK cell-activating receptor, Natural killer cell p44-related protein, NK-p44, NKp44, CD336, NCR2, LY95

Calculated MW

44 kDa KDa

Application Details

WB 1:500-1:2000
ICC/IF 1:50-1:200

Contents

Rabbit IgG in phosphate buffered saline, pH 7.4, 150mM NaCl, 0.02% sodium azide and 50% glycerol, 0.4-0.5mg/ml BSA.

Immunogen

A synthesized peptide derived from human NCTR2

Purification

Affinity-chromatography

Storage

Store at -20°C for one year. For short term storage and frequent use, store at 4°C for up to one month. Avoid repeated freeze-thaw cycles.

Anti-NCTR2 Rabbit Monoclonal Antibody - Protein Information

Name NCR2

Synonyms LY95**Function**

Cytotoxicity-activating receptor that may contribute to the increased efficiency of activated natural killer (NK) cells to mediate tumor cell lysis.

Cellular Location

Cell membrane; Single-pass type I membrane protein

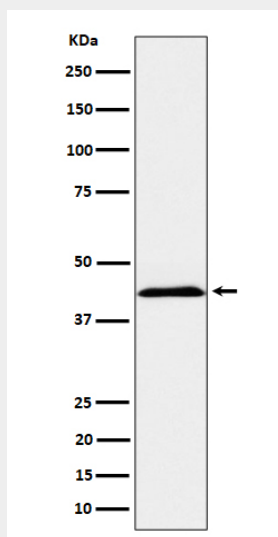
Tissue Location

Selectively expressed by activated NK cells and by in vitro cultured (i.e. activated) TCRg/d lymphoid cells

Anti-NCTR2 Rabbit Monoclonal Antibody - Protocols

Provided below are standard protocols that you may find useful for product applications.

- [Western Blot](#)
- [Blocking Peptides](#)
- [Dot Blot](#)
- [Immunohistochemistry](#)
- [Immunofluorescence](#)
- [Immunoprecipitation](#)
- [Flow Cytometry](#)
- [Cell Culture](#)

Anti-NCTR2 Rabbit Monoclonal Antibody - Images

Western blot analysis of NCTR2 expression in K562 cell lysate.