

Anti-MC5 Receptor Rabbit Monoclonal Antibody
Catalog # ABO16172**Specification**

Anti-MC5 Receptor Rabbit Monoclonal Antibody - Product Information

Application	WB, IHC
Primary Accession	P33032
Host	Rabbit
Isotype	IgG
Reactivity	Human
Clonality	Monoclonal
Format	Liquid

Description

Anti-MC5 Receptor Rabbit Monoclonal Antibody . Tested in WB, IHC applications. This antibody reacts with Human.

Anti-MC5 Receptor Rabbit Monoclonal Antibody - Additional Information

Gene ID 4161

Other Names

Melanocortin receptor 5, MC5-R, MC-2, MC5R

Calculated MW

45 kDa KDa

Application Details

WB 1:500-1:2000
IHC 1:50-1:200

Contents

Rabbit IgG in phosphate buffered saline, pH 7.4, 150mM NaCl, 0.02% sodium azide and 50% glycerol, 0.4-0.5mg/ml BSA.

Immunogen

A synthesized peptide derived from human MC5 Receptor

Purification

Affinity-chromatography

Storage

Store at -20°C for one year. For short term storage and frequent use, store at 4°C for up to one month. Avoid repeated freeze-thaw cycles.

Anti-MC5 Receptor Rabbit Monoclonal Antibody - Protein Information

Name MC5R

Function

Receptor for MSH (alpha, beta and gamma) and ACTH. The activity of this receptor is mediated by G proteins which activate adenylate cyclase. This receptor is a possible mediator of the immunomodulation properties of melanocortins.

Cellular Location

Cell membrane; Multi-pass membrane protein.

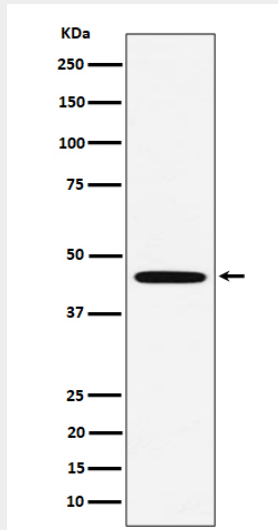
Tissue Location

Expressed in the brain but not in the melanoma cells

Anti-MC5 Receptor Rabbit Monoclonal Antibody - Protocols

Provided below are standard protocols that you may find useful for product applications.

- [Western Blot](#)
- [Blocking Peptides](#)
- [Dot Blot](#)
- [Immunohistochemistry](#)
- [Immunofluorescence](#)
- [Immunoprecipitation](#)
- [Flow Cytometry](#)
- [Cell Culture](#)

Anti-MC5 Receptor Rabbit Monoclonal Antibody - Images

Western blot analysis of MC5 Receptor expression in HeLa cell lysate.