

Anti-CLPTM1 Rabbit Monoclonal Antibody
Catalog # ABO16177**Specification**

Anti-CLPTM1 Rabbit Monoclonal Antibody - Product Information

Application	WB, IHC, IF, ICC, FC
Primary Accession	O96005
Host	Rabbit
Isotype	IgG
Reactivity	Human
Clonality	Monoclonal
Format	Liquid

Description

Anti-CLPTM1 Rabbit Monoclonal Antibody . Tested in WB, IHC, ICC/IF, Flow Cytometry applications.
This antibody reacts with Human.

Anti-CLPTM1 Rabbit Monoclonal Antibody - Additional Information

Gene ID 1209

Other Names

Putative lipid scramblase CLPTM1, Cleft lip and palate transmembrane protein 1, CLPTM1

Calculated MW

90 kDa KDa

Application Details

WB 1:500-1:2000
IHC 1:50-1:200
ICC/IF 1:50-1:200
FC 1:50

Contents

Rabbit IgG in phosphate buffered saline, pH 7.4, 150mM NaCl, 0.02% sodium azide and 50% glycerol, 0.4-0.5mg/ml BSA.

Immunogen

A synthesized peptide derived from human CLPTM1

Purification

Affinity-chromatography

Storage

Store at -20°C for one year. For short term storage and frequent use, store at 4°C for up to one month. Avoid repeated freeze-thaw cycles.

Anti-CLPTM1 Rabbit Monoclonal Antibody - Protein Information

Name CLPTM1

Function

Involved in GABAergic but not glutamatergic transmission. Binds and traps GABAA receptors in the endoplasmic reticulum (ER). Modulates postsynaptic GABAergic transmission, and therefore inhibitory neurotransmission, by reducing the plasma membrane expression of these receptors. Altered GABAergic signaling is one among many causes of cleft palate (By similarity). Might function as a lipid scramblase, translocating lipids in membranes from one leaflet to the other one (By similarity). Required for efficient glycosylphosphatidylinositol (GPI) inositol deacylation in the ER, which is a crucial step to switch GPI- anchored proteins (GPI-APs) from protein folding to transport states (PubMed: <http://www.uniprot.org/citations/29255114> target="_blank">29255114). May play a role in T-cell development (By similarity).

Cellular Location

Membrane; Multi-pass membrane protein

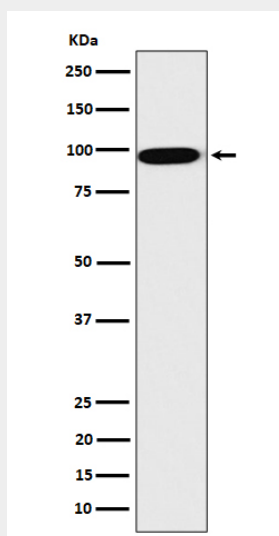
Tissue Location

Widely expressed..

Anti-CLPTM1 Rabbit Monoclonal Antibody - Protocols

Provided below are standard protocols that you may find useful for product applications.

- [Western Blot](#)
- [Blocking Peptides](#)
- [Dot Blot](#)
- [Immunohistochemistry](#)
- [Immunofluorescence](#)
- [Immunoprecipitation](#)
- [Flow Cytometry](#)
- [Cell Culture](#)

Anti-CLPTM1 Rabbit Monoclonal Antibody - Images

Western blot analysis of CLPTM1 expression in HepG2 cell lysate.