

Anti-TTF1 Rabbit Monoclonal Antibody
Catalog # ABO16179**Specification****Anti-TTF1 Rabbit Monoclonal Antibody - Product Information**

Application	WB, IHC
Primary Accession	P43699
Host	Rabbit
Isotype	IgG
Reactivity	Rat, Human, Mouse
Clonality	Monoclonal
Format	Liquid

Description

Anti-TTF1 Rabbit Monoclonal Antibody . Tested in WB, IHC applications. This antibody reacts with Human, Mouse, Rat.

Anti-TTF1 Rabbit Monoclonal Antibody - Additional Information

Gene ID 7080

Other Names

Homeobox protein Nkx-2.1, Homeobox protein NK-2 homolog A, Thyroid nuclear factor 1, Thyroid transcription factor 1, TTF-1, Thyroid-specific enhancer-binding protein, T/EBP, NKX2-1 (http://www.genenames.org/cgi-bin/gene_symbol_report?hgnc_id=11825) HGNC:11825), NKX2A, TTF1, TTF1

Calculated MW

38-42 kDa KDa

Application Details

WB 1:500-1:2000 IHC 1:50-1:200

Contents

Rabbit IgG in phosphate buffered saline, pH 7.4, 150mM NaCl, 0.02% sodium azide and 50% glycerol, 0.4-0.5mg/ml BSA.

Immunogen

A synthesized peptide derived from human TTF1

Purification

Affinity-chromatography

Storage

Store at -20°C for one year. For short term storage and frequent use, store at 4°C for up to one month. Avoid repeated freeze-thaw cycles.

Anti-TTF1 Rabbit Monoclonal Antibody - Protein Information

Name NKX2-1 ([HGNC:11825](#))

Synonyms NKX2A, TTF1, TTF1

Function

Transcription factor that binds and activates the promoter of thyroid specific genes such as thyroglobulin, thyroperoxidase, and thyrotropin receptor. Crucial in the maintenance of the thyroid differentiation phenotype. May play a role in lung development and surfactant homeostasis. Forms a regulatory loop with GRHL2 that coordinates lung epithelial cell morphogenesis and differentiation. Activates the transcription of GNRHR and plays a role in enhancing the circadian oscillation of its gene expression. Represses the transcription of the circadian transcriptional repressor NR1D1 (By similarity).

Cellular Location

Nucleus {ECO:0000250|UniProtKB:P50220}.

Tissue Location

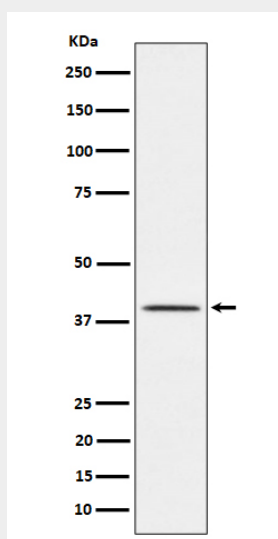
Thyroid and lung.

Anti-TTF1 Rabbit Monoclonal Antibody - Protocols

Provided below are standard protocols that you may find useful for product applications.

- [Western Blot](#)
- [Blocking Peptides](#)
- [Dot Blot](#)
- [Immunohistochemistry](#)
- [Immunofluorescence](#)
- [Immunoprecipitation](#)
- [Flow Cytometry](#)
- [Cell Culture](#)

Anti-TTF1 Rabbit Monoclonal Antibody - Images



Western blot analysis of TTF1 expression in Rat lung cell lysate.