

**Anti-NPY5R Rabbit Monoclonal Antibody**  
**Catalog # ABO16183****Specification**

---

**Anti-NPY5R Rabbit Monoclonal Antibody - Product Information**

Application	WB, IF, ICC, FC
Primary Accession	<a href="#">Q15761</a>
Host	Rabbit
Isotype	IgG
Reactivity	Human
Clonality	Monoclonal
Format	Liquid

**Description**

Anti-NPY5R Rabbit Monoclonal Antibody . Tested in WB, ICC/IF, Flow Cytometry applications. This antibody reacts with Human.

**Anti-NPY5R Rabbit Monoclonal Antibody - Additional Information**

**Gene ID** 4889

**Other Names**

Neuropeptide Y receptor type 5, NPY5-R, NPY-Y5 receptor, NPY5-R, Y5 receptor, NPY5R, NPYR5

**Calculated MW**

51 kDa KDa

**Application Details**

WB 1:500-1:2000<br>ICC/IF 1:50-1:200<br>FC 1:50

**Contents**

Rabbit IgG in phosphate buffered saline, pH 7.4, 150mM NaCl, 0.02% sodium azide and 50% glycerol, 0.4-0.5mg/ml BSA.

**Immunogen**

A synthesized peptide derived from human NPY5R

**Purification**

Affinity-chromatography

Storage

**Store at -20°C for one year. For short term storage and frequent use, store at 4°C for up to one month. Avoid repeated freeze-thaw cycles.**

**Anti-NPY5R Rabbit Monoclonal Antibody - Protein Information**

**Name** NPY5R

**Synonyms** NPYR5**Function**

Receptor for neuropeptide Y and peptide YY. The activity of this receptor is mediated by G proteins that inhibit adenylate cyclase activity. Seems to be associated with food intake. Could be involved in feeding disorders.

**Cellular Location**

Cell membrane; Multi-pass membrane protein.

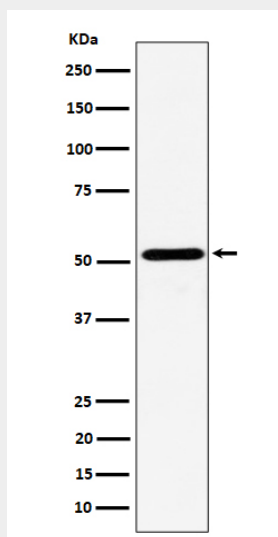
**Tissue Location**

Brain; hypothalamus.

**Anti-NPY5R Rabbit Monoclonal Antibody - Protocols**

Provided below are standard protocols that you may find useful for product applications.

- [Western Blot](#)
- [Blocking Peptides](#)
- [Dot Blot](#)
- [Immunohistochemistry](#)
- [Immunofluorescence](#)
- [Immunoprecipitation](#)
- [Flow Cytometry](#)
- [Cell Culture](#)

**Anti-NPY5R Rabbit Monoclonal Antibody - Images**

Western blot analysis of NPY5R expression in Ramos cell lysate.