

Anti-CHM Rabbit Monoclonal Antibody
Catalog # ABO16192**Specification**

Anti-CHM Rabbit Monoclonal Antibody - Product Information

Application	WB, IF, ICC
Primary Accession	P24386
Host	Rabbit
Isotype	IgG
Reactivity	Rat, Human, Mouse
Clonality	Monoclonal
Format	Liquid

Description

Anti-CHM Rabbit Monoclonal Antibody . Tested in WB, ICC/IF applications. This antibody reacts with Human, Mouse, Rat.

Anti-CHM Rabbit Monoclonal Antibody - Additional Information

Gene ID 1121

Other Names

Rab proteins geranylgeranyltransferase component A 1, Choroideremia protein, Rab escort protein 1, REP-1, TCD protein, CHM, REP1, TCD

Calculated MW

95 kDa KDa

Application Details

WB 1:500-1:2000
ICC/IF 1:50-1:200

Contents

Rabbit IgG in phosphate buffered saline, pH 7.4, 150mM NaCl, 0.02% sodium azide and 50% glycerol, 0.4-0.5mg/ml BSA.

Immunogen

A synthesized peptide derived from human CHM

Purification

Affinity-chromatography

Storage

Store at -20°C for one year. For short term storage and frequent use, store at 4°C for up to one month. Avoid repeated freeze-thaw cycles.

Anti-CHM Rabbit Monoclonal Antibody - Protein Information

Name CHM

Synonyms REP1, TCD

Function

Substrate-binding subunit of the Rab geranylgeranyltransferase (GGTase) complex. Binds unprenylated Rab proteins and presents the substrate peptide to the catalytic component B composed of RABGGTA and RABGGTB, and remains bound to it after the geranylgeranyl transfer reaction. The component A is thought to be regenerated by transferring its prenylated Rab back to the donor membrane. Besides, a pre-formed complex consisting of CHM and the Rab GGTase dimer (RGGT or component B) can bind to and prenylate Rab proteins; this alternative pathway is proposed to be the predominant pathway for Rab protein geranylgeranylation.

Cellular Location

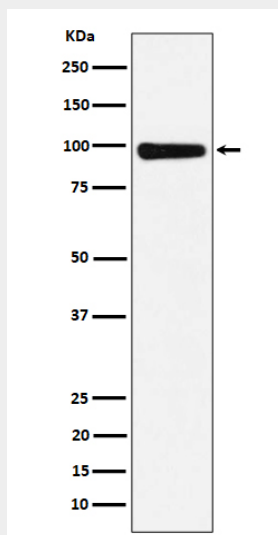
Cytoplasm, cytosol.

Anti-CHM Rabbit Monoclonal Antibody - Protocols

Provided below are standard protocols that you may find useful for product applications.

- [Western Blot](#)
- [Blocking Peptides](#)
- [Dot Blot](#)
- [Immunohistochemistry](#)
- [Immunofluorescence](#)
- [Immunoprecipitation](#)
- [Flow Cytometry](#)
- [Cell Culture](#)

Anti-CHM Rabbit Monoclonal Antibody - Images



Western blot analysis of CHM expression in 293T cell lysate.