

Anti-C1s Rabbit Monoclonal Antibody
Catalog # ABO16197**Specification**

Anti-C1s Rabbit Monoclonal Antibody - Product Information

Application	WB, IHC, IP
Primary Accession	P09871
Host	Rabbit
Isotype	IgG
Reactivity	Human
Clonality	Monoclonal
Format	Liquid

Description

Anti-C1s Rabbit Monoclonal Antibody . Tested in WB, IHC, IP applications. This antibody reacts with Human.

Anti-C1s Rabbit Monoclonal Antibody - Additional Information

Gene ID 716

Other Names

Complement C1s subcomponent, 3.4.21.42, C1 esterase, Complement component 1 subcomponent s, Complement C1s subcomponent heavy chain, Complement C1s subcomponent light chain, C1S

Calculated MW

90 kDa KDa

Application Details

WB 1:500-1:2000
IHC 1:50-1:200
IP 1:50

Contents

Rabbit IgG in phosphate buffered saline, pH 7.4, 150mM NaCl, 0.02% sodium azide and 50% glycerol, 0.4-0.5mg/ml BSA.

Immunogen

A synthesized peptide derived from human C1s

Purification

Affinity-chromatography

Storage

Store at -20°C for one year. For short term storage and frequent use, store at 4°C for up to one month. Avoid repeated freeze-thaw cycles.

Anti-C1s Rabbit Monoclonal Antibody - Protein Information

Name C1S {ECO:0000303|PubMed:3500856, ECO:0000312|HGNC:HGNC:1247}

Function

Component of the complement C1 complex, a multiprotein complex that initiates the classical pathway of the complement system, a cascade of proteins that leads to phagocytosis and breakdown of pathogens and signaling that strengthens the adaptive immune system (PubMed:11445589, PubMed:16169853, PubMed:417728, PubMed:467643, PubMed:6271784, PubMed:6282646, PubMed:6319179, PubMed:70787, PubMed:9422791). C1S is activated following association of the C1 complex with immunoglobulins (IgG or IgM) complexed with antigens to form antigen-antibody complexes on the surface of pathogens (PubMed:34155115). C1S is cleaved and activated by C1R to generate C1s subcomponent heavy and light chains (PubMed:11445589, PubMed:6271784). C1s subcomponent light chain then cleaves and activates C2 and C4, the next components of the classical complement pathway (PubMed:16169853, PubMed:467643, PubMed:6282646, PubMed:6319179, PubMed:6906228, PubMed:70787, PubMed:9422791).

Cellular Location

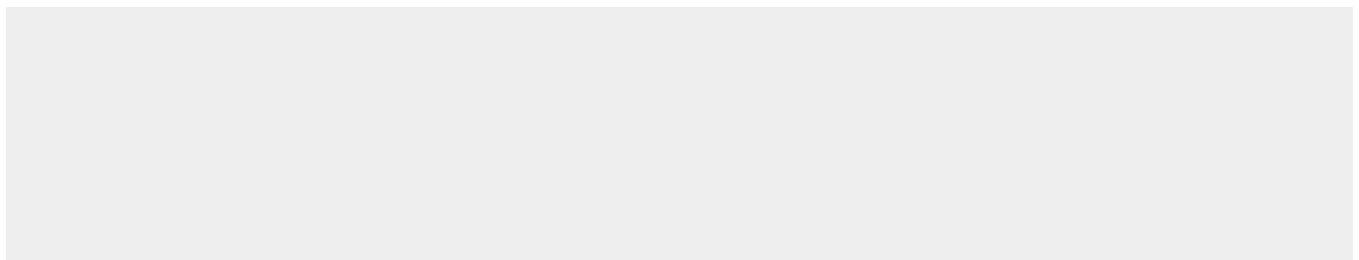
Secreted. Cell surface. Note=Recruited to the surface of pathogens by the C1Q subcomplex.

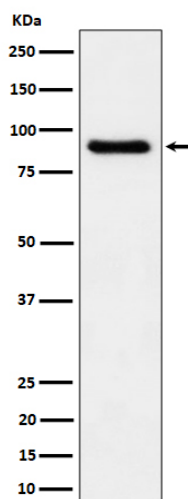
Anti-C1s Rabbit Monoclonal Antibody - Protocols

Provided below are standard protocols that you may find useful for product applications.

- [Western Blot](#)
- [Blocking Peptides](#)
- [Dot Blot](#)
- [Immunohistochemistry](#)
- [Immunofluorescence](#)
- [Immunoprecipitation](#)
- [Flow Cytometry](#)
- [Cell Culture](#)

Anti-C1s Rabbit Monoclonal Antibody - Images





Western blot analysis of C1s expression in human plasma cell lysate.