

Anti-TRPV5 Rabbit Monoclonal Antibody
Catalog # ABO16212**Specification**

Anti-TRPV5 Rabbit Monoclonal Antibody - Product Information

Application	WB, IHC
Primary Accession	Q9NQA5
Host	Rabbit
Isotype	IgG
Reactivity	Rat, Human, Mouse
Clonality	Monoclonal
Format	Liquid

Description

Anti-TRPV5 Rabbit Monoclonal Antibody . Tested in WB, IHC applications. This antibody reacts with Human, Mouse, Rat.

Anti-TRPV5 Rabbit Monoclonal Antibody - Additional Information

Gene ID 56302

Other Names

Transient receptor potential cation channel subfamily V member 5, TrpV5, Calcium transport protein 2, CaT2, Epithelial calcium channel 1, ECaC, ECaC1, Osm-9-like TRP channel 3, OTRPC3, TRPV5, ECAC1 {ECO:0000303|PubMed:10945469}

Calculated MW

100 kDa KDa

Application Details

WB 1:500-1:2000
IHC 1:50-1:200

Contents

Rabbit IgG in phosphate buffered saline, pH 7.4, 150mM NaCl, 0.02% sodium azide and 50% glycerol, 0.4-0.5mg/ml BSA.

Immunogen

A synthesized peptide derived from human TRPV5

Purification

Affinity-chromatography

Storage

Store at -20°C for one year. For short term storage and frequent use, store at 4°C for up to one month. Avoid repeated freeze-thaw cycles.

Anti-TRPV5 Rabbit Monoclonal Antibody - Protein Information

Name TRPV5

Synonyms ECAC1 {ECO:0000303|PubMed:10945469}

Function

Constitutively active calcium selective cation channel thought to be involved in Ca^{2+} reabsorption in kidney and intestine (PubMed:11549322, PubMed:18768590). Required for normal Ca^{2+} reabsorption in the kidney distal convoluted tubules (By similarity). The channel is activated by low internal calcium level and the current exhibits an inward rectification (PubMed:11549322, PubMed:18768590). A Ca^{2+} -dependent feedback regulation includes fast channel inactivation and slow current decay (By similarity). Heteromeric assembly with TRPV6 seems to modify channel properties. TRPV5-TRPV6 heteromultimeric concatemers exhibit voltage-dependent gating (By similarity).

Cellular Location

Apical cell membrane; Multi-pass membrane protein. Note=Colocalized with S100A10 and ANAX2 along the apical domain of kidney distal tubular cells (By similarity) The expression of the glycosylated form in the cell membrane is increased in the presence of WNK3 (PubMed:18768590) {ECO:0000250|UniProtKB:P69744, ECO:0000269|PubMed:18768590}

Tissue Location

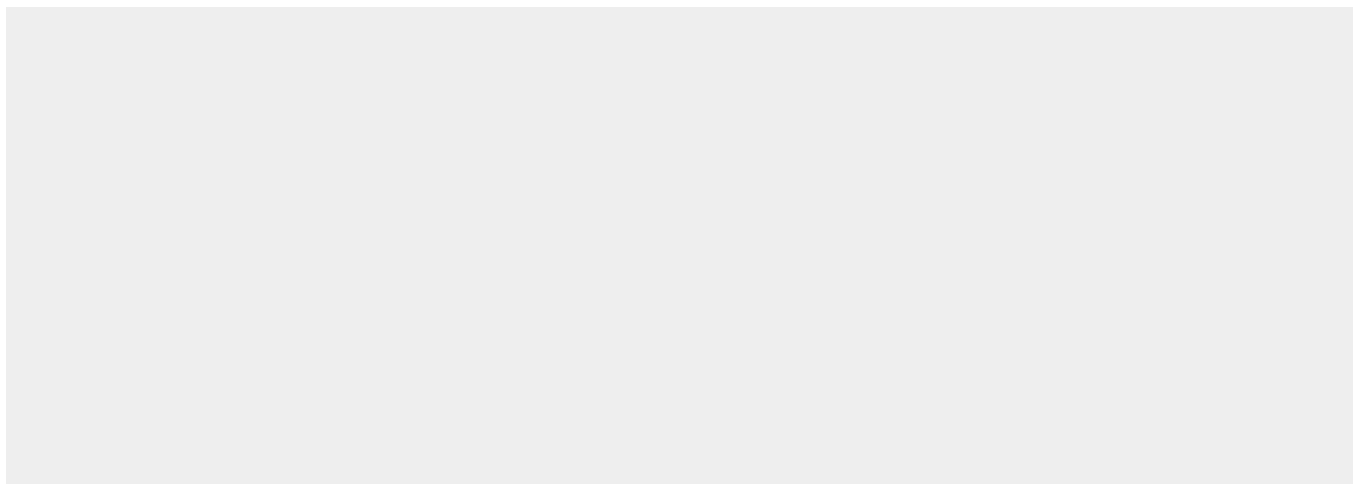
Expressed at high levels in kidney, small intestine and pancreas, and at lower levels in testis, prostate, placenta, brain, colon and rectum.

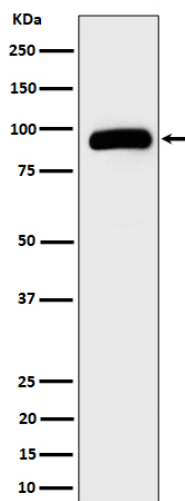
Anti-TRPV5 Rabbit Monoclonal Antibody - Protocols

Provided below are standard protocols that you may find useful for product applications.

- [Western Blot](#)
- [Blocking Peptides](#)
- [Dot Blot](#)
- [Immunohistochemistry](#)
- [Immunofluorescence](#)
- [Immunoprecipitation](#)
- [Flow Cytometry](#)
- [Cell Culture](#)

Anti-TRPV5 Rabbit Monoclonal Antibody - Images





Western blot analysis of TRPV5 expression in HepG2 cell lysate.