

Anti-Kallikrein 8 Rabbit Monoclonal Antibody
Catalog # ABO16215**Specification**

Anti-Kallikrein 8 Rabbit Monoclonal Antibody - Product Information

Application	WB, IHC
Primary Accession	O60259
Host	Rabbit
Isotype	IgG
Reactivity	Human
Clonality	Monoclonal
Format	Liquid

Description

Anti-Kallikrein 8 Rabbit Monoclonal Antibody . Tested in WB, IHC applications. This antibody reacts with Human.

Anti-Kallikrein 8 Rabbit Monoclonal Antibody - Additional Information

Gene ID 11202

Other Names

Kallikrein-8, hK8, 3.4.21.118, Neuropsin, NP, Ovasin, Serine protease 19, Serine protease TADG-14, Tumor-associated differentially expressed gene 14 protein, KLK8, NRPN, PRSS19, TADG14

Calculated MW

35 kDa KDa

Application Details

WB 1:500-1:2000
IHC 1:50-1:200

Contents

Rabbit IgG in phosphate buffered saline, pH 7.4, 150mM NaCl, 0.02% sodium azide and 50% glycerol, 0.4-0.5mg/ml BSA.

Immunogen

A synthesized peptide derived from human Kallikrein 8

Purification

Affinity-chromatography

Storage

Store at -20°C for one year. For short term storage and frequent use, store at 4°C for up to one month. Avoid repeated freeze-thaw cycles.

Anti-Kallikrein 8 Rabbit Monoclonal Antibody - Protein Information

Name KLK8

Synonyms NRPN, PRSS19, TADG14

Function

Serine protease which is capable of degrading a number of proteins such as casein, fibrinogen, kininogen, fibronectin and collagen type IV. Also cleaves L1CAM in response to increased neural activity. Induces neurite outgrowth and fasciculation of cultured hippocampal neurons. Plays a role in the formation and maturation of orphan and small synaptic boutons in the Schaffer-collateral pathway, regulates Schaffer-collateral long-term potentiation in the hippocampus and is required for memory acquisition and synaptic plasticity. Involved in skin desquamation and keratinocyte proliferation. Plays a role in the secondary phase of pathogenesis following spinal cord injury.

Cellular Location

Secreted. Cytoplasm. Note=Shows a cytoplasmic distribution in the keratinocytes

Tissue Location

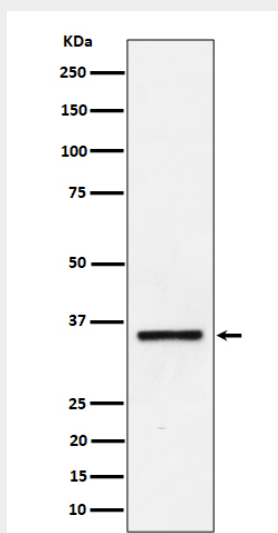
Isoform 1 is predominantly expressed in the pancreas. Isoform 2 is expressed in adult brain and hippocampus Isoform 1 and isoform 2 are found in fetal brain and placenta. Detected in salivary gland, uterus, thymus, breast, testis and kidney but not in spleen, liver, lung or normal ovarian tissue. Displays an 11.5-fold increase in Alzheimer disease hippocampus compared to controls and is overexpressed in some ovarian carcinomas. Expressed at low levels in normal skin while high levels are found in psoriasis vulgaris, seborrheic keratosis, lichen planus and squamous cell carcinoma skin samples. Expressed in the keratinocytes.

Anti-Kallikrein 8 Rabbit Monoclonal Antibody - Protocols

Provided below are standard protocols that you may find useful for product applications.

- [Western Blot](#)
- [Blocking Peptides](#)
- [Dot Blot](#)
- [Immunohistochemistry](#)
- [Immunofluorescence](#)
- [Immunoprecipitation](#)
- [Flow Cytometry](#)
- [Cell Culture](#)

Anti-Kallikrein 8 Rabbit Monoclonal Antibody - Images



Western blot analysis of Kallikrein 8 expression in Jurkat cell lysate.