

Anti-Calumenin Rabbit Monoclonal Antibody
Catalog # ABO16219**Specification**

Anti-Calumenin Rabbit Monoclonal Antibody - Product Information

Application	WB, IHC
Primary Accession	O43852
Host	Rabbit
Isotype	IgG
Reactivity	Rat, Human, Mouse
Clonality	Monoclonal
Format	Liquid

Description

Anti-Calumenin Rabbit Monoclonal Antibody . Tested in WB, IHC applications. This antibody reacts with Human, Mouse, Rat.

Anti-Calumenin Rabbit Monoclonal Antibody - Additional Information

Gene ID 813

Other Names

Calumenin, Crocalbin, IEF SSP 9302, CALU

Calculated MW

47 kDa KDa

Application Details

WB 1:500-1:2000
IHC 1:50-1:200

Contents

Rabbit IgG in phosphate buffered saline, pH 7.4, 150mM NaCl, 0.02% sodium azide and 50% glycerol, 0.4-0.5mg/ml BSA.

Immunogen

A synthesized peptide derived from human Calumenin

Purification

Affinity-chromatography

Storage

Store at -20°C for one year. For short term storage and frequent use, store at 4°C for up to one month. Avoid repeated freeze-thaw cycles.

Anti-Calumenin Rabbit Monoclonal Antibody - Protein Information

Name CALU

Function

Involved in regulation of vitamin K-dependent carboxylation of multiple N-terminal glutamate residues. Seems to inhibit gamma- carboxylase GGCX. Binds 7 calcium ions with a low affinity (By similarity).

Cellular Location

Endoplasmic reticulum membrane. Golgi apparatus. Secreted. Melanosome. Sarcoplasmic reticulum lumen. Note=Identified by mass spectrometry in melanosome fractions from stage I to stage IV.

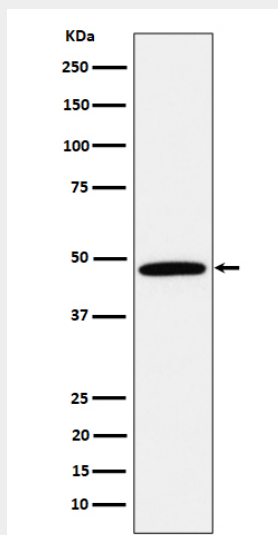
Tissue Location

Ubiquitously expressed. Expressed at high levels in heart, placenta and skeletal muscle, at lower levels in lung, kidney and pancreas and at very low levels in brain and liver

Anti-Calumenin Rabbit Monoclonal Antibody - Protocols

Provided below are standard protocols that you may find useful for product applications.

- [Western Blot](#)
- [Blocking Peptides](#)
- [Dot Blot](#)
- [Immunohistochemistry](#)
- [Immunofluorescence](#)
- [Immunoprecipitation](#)
- [Flow Cytometry](#)
- [Cell Culture](#)

Anti-Calumenin Rabbit Monoclonal Antibody - Images

Western blot analysis of Calumenin expression in 293T cell lysate.