

Anti-TOE1 Rabbit Monoclonal Antibody
Catalog # ABO16220**Specification**

Anti-TOE1 Rabbit Monoclonal Antibody - Product Information

Application	WB
Primary Accession	Q96GM8
Host	Rabbit
Isotype	IgG
Reactivity	Human
Clonality	Monoclonal
Format	Liquid

Description

Anti-TOE1 Rabbit Monoclonal Antibody . Tested in WB application. This antibody reacts with Human.

Anti-TOE1 Rabbit Monoclonal Antibody - Additional Information

Gene ID 114034

Other Names

Target of EGR1 protein 1, TOE1

Calculated MW

60 kDa KDa

Application Details

WB 1:500-1:2000

Contents

Rabbit IgG in phosphate buffered saline, pH 7.4, 150mM NaCl, 0.02% sodium azide and 50% glycerol, 0.4-0.5mg/ml BSA.

Immunogen

A synthesized peptide derived from human TOE1

Purification

Affinity-chromatography

Storage

Store at -20°C for one year. For short term storage and frequent use, store at 4°C for up to one month. Avoid repeated freeze-thaw cycles.

Anti-TOE1 Rabbit Monoclonal Antibody - Protein Information

Name TOE1

Function

Inhibits cell growth rate and cell cycle. Induces CDKN1A expression as well as TGF-beta expression. Mediates the inhibitory growth effect of EGR1. Involved in the maturation of snRNAs and snRNA 3'-tail processing (PubMed:28092684).

Cellular Location

Nucleus, nucleolus. Nucleus speckle. Note=Localizes to nuclear speckles

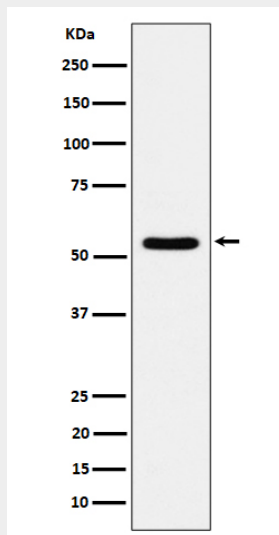
Tissue Location

Widely expressed..

Anti-TOE1 Rabbit Monoclonal Antibody - Protocols

Provided below are standard protocols that you may find useful for product applications.

- [Western Blot](#)
- [Blocking Peptides](#)
- [Dot Blot](#)
- [Immunohistochemistry](#)
- [Immunofluorescence](#)
- [Immunoprecipitation](#)
- [Flow Cytometry](#)
- [Cell Culture](#)

Anti-TOE1 Rabbit Monoclonal Antibody - Images

Western blot analysis of TOE1 expression in 293T cell lysate.