

Anti-ICAM2 / CD102 Rabbit Monoclonal Antibody
Catalog # ABO16291**Specification**

Anti-ICAM2 / CD102 Rabbit Monoclonal Antibody - Product Information

Application	WB, IHC, IP
Primary Accession	P35330
Host	Rabbit
Isotype	IgG
Reactivity	Mouse
Clonality	Monoclonal
Format	Liquid

Description

Anti-ICAM2 / CD102 Rabbit Monoclonal Antibody . Tested in WB, IHC, IP applications. This antibody reacts with Mouse.

Anti-ICAM2 / CD102 Rabbit Monoclonal Antibody - Additional Information

Gene ID 15896

Other Names

Intercellular adhesion molecule 2, ICAM-2, Lymphocyte function-associated AG-1 counter-receptor, CD102, Icam2, Icam-2

Calculated MW

60 kDa KDa

Application Details

WB 1:500-1:2000
IHC 1:50-1:200
IP 1:50

Contents

Rabbit IgG in phosphate buffered saline, pH 7.4, 150mM NaCl, 0.02% sodium azide and 50% glycerol, 0.4-0.5mg/ml BSA.

Immunogen

A synthesized peptide derived from human ICAM2 / CD102

Purification

Affinity-chromatography

Storage

Store at -20°C for one year. For short term storage and frequent use, store at 4°C for up to one month. Avoid repeated freeze-thaw cycles.

Anti-ICAM2 / CD102 Rabbit Monoclonal Antibody - Protein Information

Name Icam2

Synonyms Icam-2**Function**

ICAM proteins are ligands for the leukocyte adhesion protein LFA-1 (integrin alpha-L/beta-2). ICAM2 may play a role in lymphocyte recirculation by blocking LFA-1-dependent cell adhesion. It mediates adhesive interactions important for antigen-specific immune response, NK-cell mediated clearance, lymphocyte recirculation, and other cellular interactions important for immune response and surveillance.

Cellular Location

Membrane; Single-pass type I membrane protein. Cell projection, microvillus. Note=Co-localizes with RDX, EZR and MSN in microvilli.

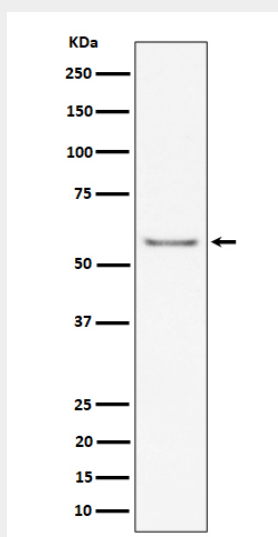
Tissue Location

Expressed in endothelial cells and leukocytes. High levels found in lung

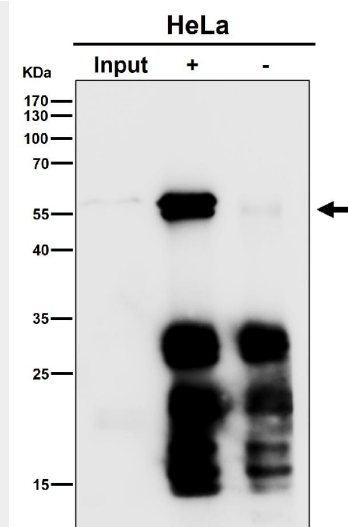
Anti-ICAM2 / CD102 Rabbit Monoclonal Antibody - Protocols

Provided below are standard protocols that you may find useful for product applications.

- [Western Blot](#)
- [Blocking Peptides](#)
- [Dot Blot](#)
- [Immunohistochemistry](#)
- [Immunofluorescence](#)
- [Immunoprecipitation](#)
- [Flow Cytometry](#)
- [Cell Culture](#)

Anti-ICAM2 / CD102 Rabbit Monoclonal Antibody - Images

Western blot analysis of ICAM2 / CD102 expression in mouse heart cell lysate.



Immunoprecipitate (IP) analysis using the Antibody at 1:50 dilution. (wb at 1:3K dilution)