

Anti-EYA2 Rabbit Monoclonal Antibody
Catalog # ABO16295**Specification**

Anti-EYA2 Rabbit Monoclonal Antibody - Product Information

Application	WB
Primary Accession	O00167
Host	Rabbit
Isotype	IgG
Reactivity	Human
Clonality	Monoclonal
Format	Liquid

Description

Anti-EYA2 Rabbit Monoclonal Antibody . Tested in WB application. This antibody reacts with Human.

Anti-EYA2 Rabbit Monoclonal Antibody - Additional Information

Gene ID 2139

Other Names

Eyes absent homolog 2, 3.1.3.48, EYA2, EAB1

Calculated MW

60 kDa KDa

Application Details

WB 1:500-1:2000

Contents

Rabbit IgG in phosphate buffered saline, pH 7.4, 150mM NaCl, 0.02% sodium azide and 50% glycerol, 0.4-0.5mg/ml BSA.

Immunogen

A synthesized peptide derived from human EYA2

Purification

Affinity-chromatography

Storage

Store at -20°C for one year. For short term storage and frequent use, store at 4°C for up to one month. Avoid repeated freeze-thaw cycles.

Anti-EYA2 Rabbit Monoclonal Antibody - Protein Information

Name EYA2

Synonyms EAB1

Function

Functions both as protein phosphatase and as transcriptional coactivator for SIX1, and probably also for SIX2, SIX4 and SIX5 (PubMed:12500905, PubMed:23435380). Tyrosine phosphatase that dephosphorylates 'Tyr-142' of histone H2AX (H2AXY142ph) and promotes efficient DNA repair via the recruitment of DNA repair complexes containing MDC1. 'Tyr-142' phosphorylation of histone H2AX plays a central role in DNA repair and acts as a mark that distinguishes between apoptotic and repair responses to genotoxic stress (PubMed:19351884). Its function as histone phosphatase may contribute to its function in transcription regulation during organogenesis. Plays an important role in hypaxial muscle development together with SIX1 and DACH2; in this it is functionally redundant with EYA1 (PubMed:12500905).

Cellular Location

Cytoplasm. Nucleus Note=Retained in the cytoplasm via interaction with GNAZ and GNAI2 (PubMed:10906137). Interaction with SIX1, SIX2, SIX4 or SIX5 is required for translocation to the nucleus (PubMed:10906137, PubMed:12500905).

Tissue Location

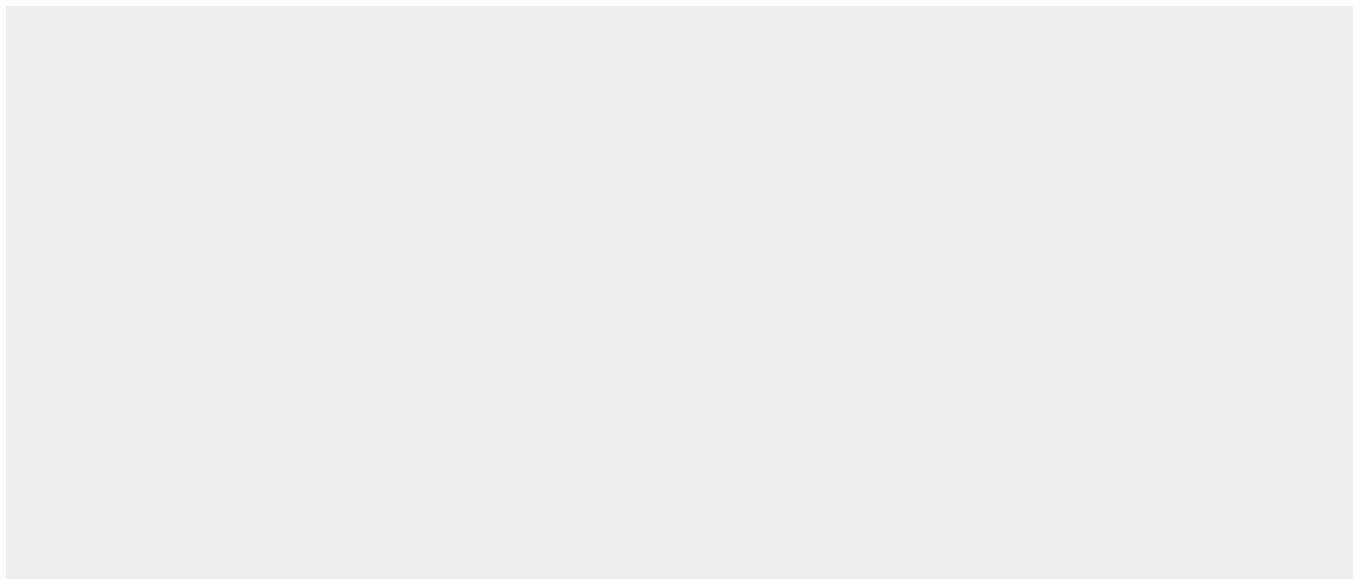
Highest expression in muscle with lower levels in kidney, placenta, pancreas, brain and heart

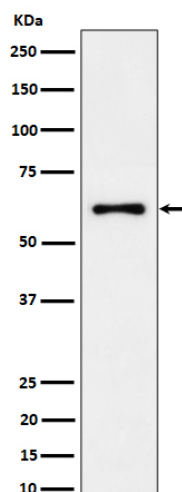
Anti-EYA2 Rabbit Monoclonal Antibody - Protocols

Provided below are standard protocols that you may find useful for product applications.

- [Western Blot](#)
- [Blocking Peptides](#)
- [Dot Blot](#)
- [Immunohistochemistry](#)
- [Immunofluorescence](#)
- [Immunoprecipitation](#)
- [Flow Cytometry](#)
- [Cell Culture](#)

Anti-EYA2 Rabbit Monoclonal Antibody - Images





Western blot analysis of EYA2 expression in 293T cell lysate.