

**Anti-Epsin 1 Rabbit Monoclonal Antibody**  
**Catalog # ABO16303****Specification**

---

**Anti-Epsin 1 Rabbit Monoclonal Antibody - Product Information**

|                   |                        |
|-------------------|------------------------|
| Application       | WB, IF, ICC            |
| Primary Accession | <a href="#">Q9Y6I3</a> |
| Host              | Rabbit                 |
| Isotype           | IgG                    |
| Reactivity        | Rat, Human, Mouse      |
| Clonality         | Monoclonal             |
| Format            | Liquid                 |

**Description**

Anti-Epsin 1 Rabbit Monoclonal Antibody . Tested in WB, ICC/IF applications. This antibody reacts with Human, Mouse, Rat.

**Anti-Epsin 1 Rabbit Monoclonal Antibody - Additional Information**

**Gene ID** 29924

**Other Names**

Epsin-1, EH domain-binding mitotic phosphoprotein, EPS-15-interacting protein 1, EPN1

**Calculated MW**

90 kDa KDa

**Application Details**

WB 1:500-1:2000<br>ICC/IF 1:50-1:200

**Contents**

Rabbit IgG in phosphate buffered saline, pH 7.4, 150mM NaCl, 0.02% sodium azide and 50% glycerol, 0.4-0.5mg/ml BSA.

**Immunogen**

A synthesized peptide derived from human Epsin 1

**Purification**

Affinity-chromatography

**Storage**

**Store at -20°C for one year. For short term storage and frequent use, store at 4°C for up to one month. Avoid repeated freeze-thaw cycles.**

**Anti-Epsin 1 Rabbit Monoclonal Antibody - Protein Information**

**Name** EPN1

**Function**

Binds to membranes enriched in phosphatidylinositol 4,5- biphosphate (PtdIns(4,5)P2). Modifies membrane curvature and facilitates the formation of clathrin-coated invaginations (By similarity). Regulates receptor-mediated endocytosis (PubMed:<a href="http://www.uniprot.org/citations/10393179" target="\_blank">10393179</a>, PubMed:<a href="http://www.uniprot.org/citations/10557078" target="\_blank">10557078</a>).

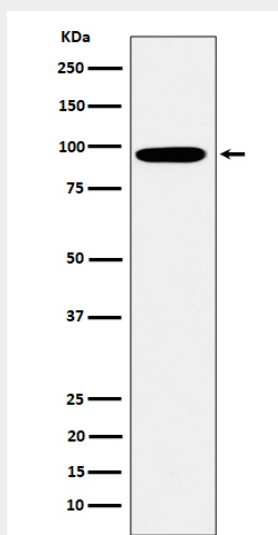
**Cellular Location**

Cytoplasm. Cell membrane; Peripheral membrane protein. Nucleus. Membrane, clathrin-coated pit Note=Associated with the cytoplasmic membrane at sites where clathrin- coated pits are forming. Colocalizes with clathrin and AP-2 in a punctate pattern on the plasma membrane. Detected in presynaptic nerve terminals and in Golgi stacks. May shuttle to the nucleus when associated with ZBTB16/ZNF145 (By similarity).

**Anti-Epsin 1 Rabbit Monoclonal Antibody - Protocols**

Provided below are standard protocols that you may find useful for product applications.

- [Western Blot](#)
- [Blocking Peptides](#)
- [Dot Blot](#)
- [Immunohistochemistry](#)
- [Immunofluorescence](#)
- [Immunoprecipitation](#)
- [Flow Cytometry](#)
- [Cell Culture](#)

**Anti-Epsin 1 Rabbit Monoclonal Antibody - Images**

Western blot analysis of Epsin 1 expression in K562 cell lysate.