

Anti-MAP3K4 Rabbit Monoclonal Antibody
Catalog # ABO16305**Specification**

Anti-MAP3K4 Rabbit Monoclonal Antibody - Product Information

Application	WB, IHC
Primary Accession	Q9Y6R4
Host	Rabbit
Isotype	IgG
Reactivity	Human
Clonality	Monoclonal
Format	Liquid

Description

Anti-MAP3K4 Rabbit Monoclonal Antibody . Tested in WB, IHC applications. This antibody reacts with Human.

Anti-MAP3K4 Rabbit Monoclonal Antibody - Additional Information

Gene ID 4216

Other Names

Mitogen-activated protein kinase kinase kinase 4, 2.7.11.25, MAP three kinase 1, MAPK/ERK kinase kinase 4, MEK kinase 4, MEKK 4, MAP3K4, KIAA0213, MAPKKK4, MEKK4, MTK1

Calculated MW

190 kDa KDa

Application Details

WB 1:500-1:2000
IHC 1:50-1:200

Contents

Rabbit IgG in phosphate buffered saline, pH 7.4, 150mM NaCl, 0.02% sodium azide and 50% glycerol, 0.4-0.5mg/ml BSA.

Immunogen

A synthesized peptide derived from human MAP3K4

Purification

Affinity-chromatography

Storage

Store at -20°C for one year. For short term storage and frequent use, store at 4°C for up to one month. Avoid repeated freeze-thaw cycles.

Anti-MAP3K4 Rabbit Monoclonal Antibody - Protein Information

Name MAP3K4

Synonyms KIAA0213, MAPKKK4, MEKK4, MTK1

Function

Component of a protein kinase signal transduction cascade. Activates the CSBP2, P38 and JNK MAPK pathways, but not the ERK pathway. Specifically phosphorylates and activates MAP2K4 and MAP2K6.

Cellular Location

Cytoplasm, perinuclear region. Note=Localized in perinuclear vesicular-like structures, probably Golgi-associated vesicles.

Tissue Location

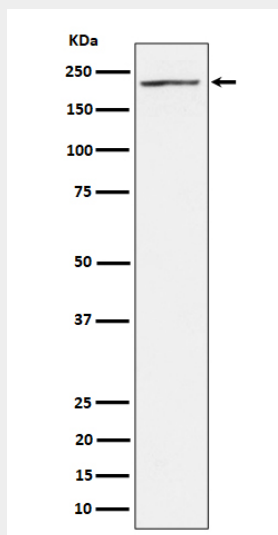
Expressed at high levels in heart, placenta, skeletal muscle and pancreas, and at lower levels in other tissues

Anti-MAP3K4 Rabbit Monoclonal Antibody - Protocols

Provided below are standard protocols that you may find useful for product applications.

- [Western Blot](#)
- [Blocking Peptides](#)
- [Dot Blot](#)
- [Immunohistochemistry](#)
- [Immunofluorescence](#)
- [Immunoprecipitation](#)
- [Flow Cytometry](#)
- [Cell Culture](#)

Anti-MAP3K4 Rabbit Monoclonal Antibody - Images



Western blot analysis of MAP3K4 expression in 293T cell lysate.