

Anti-GRK6 Rabbit Monoclonal Antibody
Catalog # ABO16311**Specification**

Anti-GRK6 Rabbit Monoclonal Antibody - Product Information

Application	WB
Primary Accession	P43250
Host	Rabbit
Isotype	IgG
Reactivity	Human, Mouse
Clonality	Monoclonal
Format	Liquid

Description

Anti-GRK6 Rabbit Monoclonal Antibody . Tested in WB application. This antibody reacts with Human, Mouse.

Anti-GRK6 Rabbit Monoclonal Antibody - Additional Information

Gene ID 2870

Other Names

G protein-coupled receptor kinase 6, 2.7.11.16, G protein-coupled receptor kinase GRK6, GRK6, GPRK6

Calculated MW

66 kDa KDa

Application Details

WB 1:500-1:2000

Contents

Rabbit IgG in phosphate buffered saline, pH 7.4, 150mM NaCl, 0.02% sodium azide and 50% glycerol, 0.4-0.5mg/ml BSA.

Immunogen

A synthesized peptide derived from human GRK6

Purification

Affinity-chromatography

Storage

Store at -20°C for one year. For short term storage and frequent use, store at 4°C for up to one month. Avoid repeated freeze-thaw cycles.

Anti-GRK6 Rabbit Monoclonal Antibody - Protein Information

Name GRK6

Synonyms GPRK6**Function**

Specifically phosphorylates the activated forms of G protein- coupled receptors. Such receptor phosphorylation initiates beta- arrestin-mediated receptor desensitization, internalization, and signaling events leading to their desensitization. Seems to be involved in the desensitization of D2-like dopamine receptors in striatum and chemokine receptor CXCR4 which is critical for CXCL12-induced cell chemotaxis (By similarity). Phosphorylates rhodopsin (RHO) (in vitro) and a non G-protein-coupled receptor: LRP6 during Wnt signaling (in vitro).

Cellular Location

Membrane; Lipid-anchor.

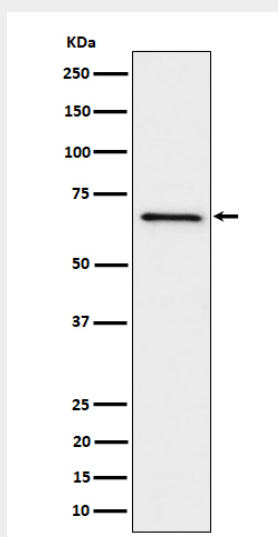
Tissue Location

Widely expressed..

Anti-GRK6 Rabbit Monoclonal Antibody - Protocols

Provided below are standard protocols that you may find useful for product applications.

- [Western Blot](#)
- [Blocking Peptides](#)
- [Dot Blot](#)
- [Immunohistochemistry](#)
- [Immunofluorescence](#)
- [Immunoprecipitation](#)
- [Flow Cytometry](#)
- [Cell Culture](#)

Anti-GRK6 Rabbit Monoclonal Antibody - Images

Western blot analysis of GRK6 expression in Ramos cell lysate.