

Anti-Cyclin H/p34 Rabbit Monoclonal Antibody
Catalog # ABO16313**Specification**

Anti-Cyclin H/p34 Rabbit Monoclonal Antibody - Product Information

Application	WB
Primary Accession	P51946
Host	Rabbit
Isotype	IgG
Reactivity	Rat, Human, Mouse
Clonality	Monoclonal
Format	Liquid

Description

Anti-Cyclin H/p34 Rabbit Monoclonal Antibody . Tested in WB application. This antibody reacts with Human, Mouse, Rat.

Anti-Cyclin H/p34 Rabbit Monoclonal Antibody - Additional Information

Gene ID 902

Other Names

Cyclin-H, MO15-associated protein, p34, p37, CCNH

Calculated MW

35 kDa KDa

Application Details

WB 1:500-1:2000

Contents

Rabbit IgG in phosphate buffered saline, pH 7.4, 150mM NaCl, 0.02% sodium azide and 50% glycerol, 0.4-0.5mg/ml BSA.

Immunogen

A synthesized peptide derived from human Cyclin H/p34

Purification

Affinity-chromatography

Storage

Store at -20°C for one year. For short term storage and frequent use, store at 4°C for up to one month. Avoid repeated freeze-thaw cycles.

Anti-Cyclin H/p34 Rabbit Monoclonal Antibody - Protein Information

Name CCNH

Function

Regulates CDK7, the catalytic subunit of the CDK-activating kinase (CAK) enzymatic complex. CAK activates the cyclin-associated kinases CDK1, CDK2, CDK4 and CDK6 by threonine phosphorylation. CAK complexed to the core-TFIIF basal transcription factor activates RNA polymerase II by serine phosphorylation of the repetitive C-terminal domain (CTD) of its large subunit (POLR2A), allowing its escape from the promoter and elongation of the transcripts. Involved in cell cycle control and in RNA transcription by RNA polymerase II. Its expression and activity are constant throughout the cell cycle.

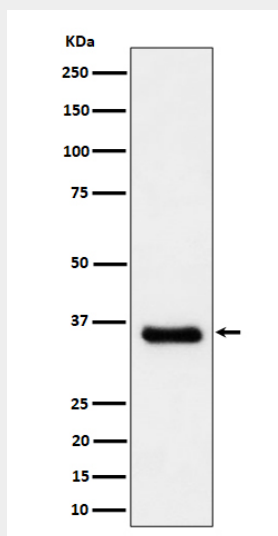
Cellular Location

Nucleus.

Anti-Cyclin H/p34 Rabbit Monoclonal Antibody - Protocols

Provided below are standard protocols that you may find useful for product applications.

- [Western Blot](#)
- [Blocking Peptides](#)
- [Dot Blot](#)
- [Immunohistochemistry](#)
- [Immunofluorescence](#)
- [Immunoprecipitation](#)
- [Flow Cytometry](#)
- [Cell Culture](#)

Anti-Cyclin H/p34 Rabbit Monoclonal Antibody - Images

Western blot analysis of Cyclin H/p34 expression in A431 cell lysate.