

**Anti-Ube2L3 / UBC7 Rabbit Monoclonal Antibody**  
**Catalog # ABO16326****Specification**

---

**Anti-Ube2L3 / UBC7 Rabbit Monoclonal Antibody - Product Information**

Application	WB, IHC, IF, ICC
Primary Accession	<a href="#">P68036</a>
Host	Rabbit
Isotype	IgG
Reactivity	Rat, Human, Mouse
Clonality	Monoclonal
Format	Liquid

**Description**

Anti-Ube2L3 / UBC7 Rabbit Monoclonal Antibody . Tested in WB, IHC, ICC/IF applications. This antibody reacts with Human, Mouse, Rat.

**Anti-Ube2L3 / UBC7 Rabbit Monoclonal Antibody - Additional Information**

**Gene ID** 7332

**Other Names**

Ubiquitin-conjugating enzyme E2 L3, 2.3.2.23, E2 ubiquitin-conjugating enzyme L3, L-UBC, Ubch7, Ubiquitin carrier protein L3, Ubiquitin-conjugating enzyme E2-F1, Ubiquitin-protein ligase L3, UBE2L3, UBCE7, UBC7

**Calculated MW**

17 kDa KDa

**Application Details**

WB 1:500-1:2000<br>IHC 1:50-1:200<br>ICC/IF 1:50-1:200

**Contents**

Rabbit IgG in phosphate buffered saline, pH 7.4, 150mM NaCl, 0.02% sodium azide and 50% glycerol, 0.4-0.5mg/ml BSA.

**Immunogen**

A synthesized peptide derived from human Ube2L3 / UBC7

**Purification**

Affinity-chromatography

**Storage**

**Store at -20°C for one year. For short term storage and frequent use, store at 4°C for up to one month. Avoid repeated freeze-thaw cycles.**

**Anti-Ube2L3 / UBC7 Rabbit Monoclonal Antibody - Protein Information**

**Name** UBE2L3

**Synonyms** UBCE7, UBCH7

**Function**

Ubiquitin-conjugating enzyme E2 that specifically acts with HECT-type and RBR family E3 ubiquitin-protein ligases. Does not function with most RING-containing E3 ubiquitin-protein ligases because it lacks intrinsic E3-independent reactivity with lysine; in contrast, it has activity with the RBR family E3 enzymes, such as PRKN, RNF31 and ARIH1, that function like RING-HECT hybrids. Accepts ubiquitin from the E1 complex and catalyzes its covalent attachment to other proteins. Mediates ubiquitination by the CUL9-RBX1 complex (PubMed:<a href="http://www.uniprot.org/citations/38605244" target="\_blank">38605244</a>). In vitro catalyzes 'Lys-11'-linked polyubiquitination. Involved in the selective degradation of short-lived and abnormal proteins. Down- regulated during the S-phase it is involved in progression through the cell cycle. Regulates nuclear hormone receptors transcriptional activity. May play a role in myelopoiesis.

**Cellular Location**

Nucleus. Cytoplasm

**Tissue Location**

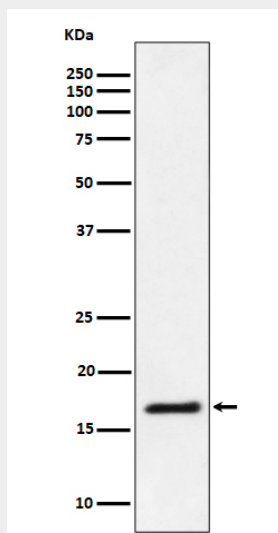
Ubiquitous, with highest expression in testis.

**Anti-Ube2L3 / UBCH7 Rabbit Monoclonal Antibody - Protocols**

Provided below are standard protocols that you may find useful for product applications.

- [Western Blot](#)
- [Blocking Peptides](#)
- [Dot Blot](#)
- [Immunohistochemistry](#)
- [Immunofluorescence](#)
- [Immunoprecipitation](#)
- [Flow Cytometry](#)
- [Cell Culture](#)

**Anti-Ube2L3 / UBCH7 Rabbit Monoclonal Antibody - Images**



Western blot analysis of Ube2L3 / UBCH7 expression in Jurkat cell lysate.