

Anti-ALDH7A1 Rabbit Monoclonal Antibody
Catalog # ABO16327**Specification**

Anti-ALDH7A1 Rabbit Monoclonal Antibody - Product Information

Application	WB, IHC
Primary Accession	P49419
Host	Rabbit
Isotype	IgG
Reactivity	Human
Clonality	Monoclonal
Format	Liquid

Description

Anti-ALDH7A1 Rabbit Monoclonal Antibody . Tested in WB, IHC applications. This antibody reacts with Human.

Anti-ALDH7A1 Rabbit Monoclonal Antibody - Additional Information

Gene ID 501

Other Names

Alpha-aminoadipic semialdehyde dehydrogenase, Alpha-AASA dehydrogenase, 1.2.1.31, Aldehyde dehydrogenase family 7 member A1, 1.2.1.3, Antiquitin-1, Betaine aldehyde dehydrogenase, 1.2.1.8, Delta1-piperidine-6-carboxylate dehydrogenase, P6c dehydrogenase, ALDH7A1 (http://www.genenames.org/cgi-bin/gene_symbol_report?hgnc_id=877), ATQ1

Calculated MW

55 kDa KDa

Application Details

WB 1:500-1:2000
IHC 1:50-1:200

Contents

Rabbit IgG in phosphate buffered saline, pH 7.4, 150mM NaCl, 0.02% sodium azide and 50% glycerol, 0.4-0.5mg/ml BSA.

Immunogen

A synthesized peptide derived from human ALDH7A1

Purification

Affinity-chromatography

Storage

Store at -20°C for one year. For short term storage and frequent use, store at 4°C for up to one month. Avoid repeated freeze-thaw cycles.

Anti-ALDH7A1 Rabbit Monoclonal Antibody - Protein Information

Name ALDH7A1 ([HGNC:877](#))

Synonyms ATQ1

Function

Multifunctional enzyme mediating important protective effects. Metabolizes betaine aldehyde to betaine, an important cellular osmolyte and methyl donor. Protects cells from oxidative stress by metabolizing a number of lipid peroxidation-derived aldehydes. Involved in lysine catabolism.

Cellular Location

[Isoform 2]: Cytoplasm, cytosol. Nucleus

Tissue Location

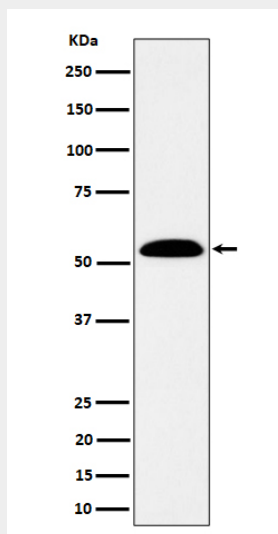
Abundant in hepatoma cells and fetal cochlea, ovary, eye, heart, adrenal gland, liver and kidney. Low levels present in adult peripheral blood leukocytes and fetal brain, thymus, spleen, skeletal muscle, lung and tongue.

Anti-ALDH7A1 Rabbit Monoclonal Antibody - Protocols

Provided below are standard protocols that you may find useful for product applications.

- [Western Blot](#)
- [Blocking Peptides](#)
- [Dot Blot](#)
- [Immunohistochemistry](#)
- [Immunofluorescence](#)
- [Immunoprecipitation](#)
- [Flow Cytometry](#)
- [Cell Culture](#)

Anti-ALDH7A1 Rabbit Monoclonal Antibody - Images



Western blot analysis of ALDH7A1 expression in SW480 cell lysate.