

Anti-Cip4 Rabbit Monoclonal Antibody
Catalog # ABO16334**Specification**

Anti-Cip4 Rabbit Monoclonal Antibody - Product Information

Application	WB, IHC
Primary Accession	Q15642
Host	Rabbit
Isotype	IgG
Reactivity	Human, Mouse
Clonality	Monoclonal
Format	Liquid

Description

Anti-Cip4 Rabbit Monoclonal Antibody . Tested in WB, IHC applications. This antibody reacts with Human, Mouse.

Anti-Cip4 Rabbit Monoclonal Antibody - Additional Information

Gene ID 9322

Other Names

Cdc42-interacting protein 4, Protein Felic, Salt tolerant protein, hSTP, Thyroid receptor-interacting protein 10, TR-interacting protein 10, TRIP-10, TRIP10, CIP4, STOT, STP

Calculated MW

75 kDa KDa

Application Details

WB 1:500-1:2000
IHC 1:50-1:200

Contents

Rabbit IgG in phosphate buffered saline, pH 7.4, 150mM NaCl, 0.02% sodium azide and 50% glycerol, 0.4-0.5mg/ml BSA.

Immunogen

A synthesized peptide derived from human Cip4

Purification

Affinity-chromatography

Storage

Store at -20°C for one year. For short term storage and frequent use, store at 4°C for up to one month. Avoid repeated freeze-thaw cycles.

Anti-Cip4 Rabbit Monoclonal Antibody - Protein Information

Name TRIP10

Synonyms CIP4, STOT, STP**Function**

Required for translocation of GLUT4 to the plasma membrane in response to insulin signaling (By similarity). Required to coordinate membrane tubulation with reorganization of the actin cytoskeleton during endocytosis. Binds to lipids such as phosphatidylinositol 4,5- biphosphate and phosphatidylserine and promotes membrane invagination and the formation of tubules. Also promotes CDC42-induced actin polymerization by recruiting WASL/N-WASP which in turn activates the Arp2/3 complex. Actin polymerization may promote the fission of membrane tubules to form endocytic vesicles. Required for the formation of podosomes, actin-rich adhesion structures specific to monocyte- derived cells. May be required for the lysosomal retention of FASLG/FASL.

Cellular Location

Cytoplasm, cytoskeleton. Cytoplasm, cell cortex. Lysosome. Golgi apparatus. Cell membrane. Cell projection, phagocytic cup. Note=Translocates to the plasma membrane in response to insulin stimulation, and this may require active RHOQ (By similarity) Localizes to cortical regions coincident with F-actin, to lysosomes and to sites of phagocytosis in macrophages. Also localizes to the Golgi, and this requires AKAP9.

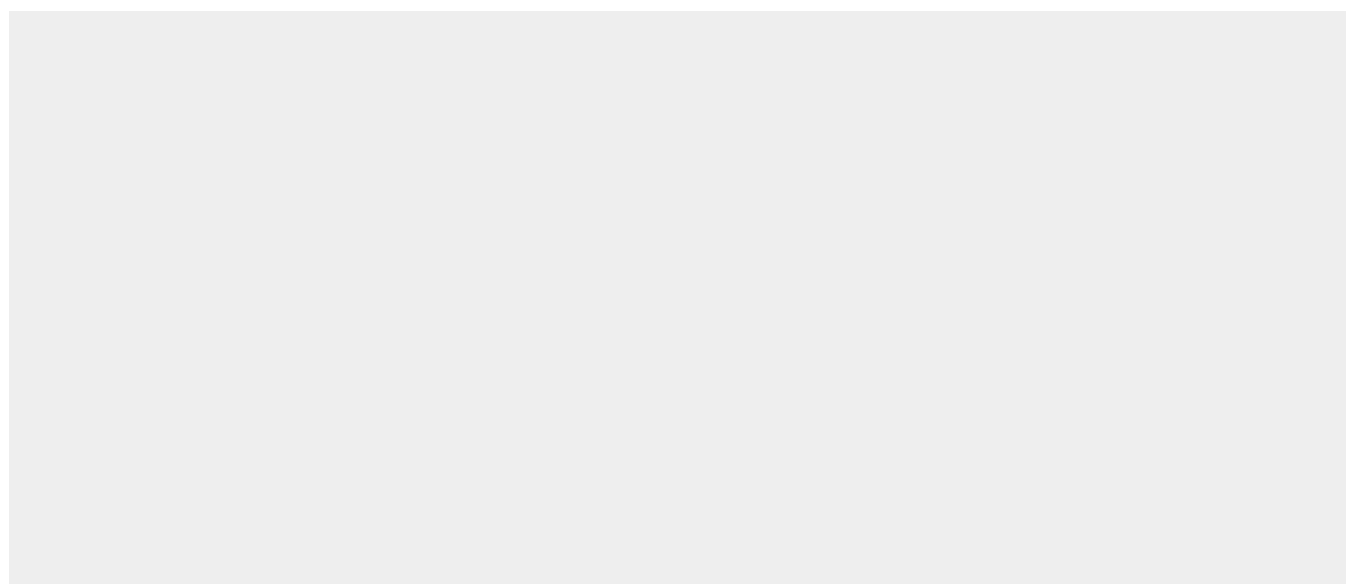
Tissue Location

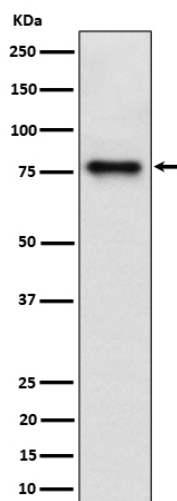
Expressed in brain, colon, heart, kidney, liver, lung, megakaryocyte, ovary, pancreas, peripheral blood lymphocytes, placenta, prostate, skeletal muscle, small intestine, spleen, testis, thymus and trachea.

Anti-Cip4 Rabbit Monoclonal Antibody - Protocols

Provided below are standard protocols that you may find useful for product applications.

- [Western Blot](#)
- [Blocking Peptides](#)
- [Dot Blot](#)
- [Immunohistochemistry](#)
- [Immunofluorescence](#)
- [Immunoprecipitation](#)
- [Flow Cytometry](#)
- [Cell Culture](#)

Anti-Cip4 Rabbit Monoclonal Antibody - Images



Western blot analysis of Cip4 expression in HepG2 cell lysate.