

Anti-Cadherin 10 Rabbit Monoclonal Antibody
Catalog # ABO16349**Specification**

Anti-Cadherin 10 Rabbit Monoclonal Antibody - Product Information

Application	WB
Primary Accession	Q9Y6N8
Host	Rabbit
Isotype	IgG
Reactivity	Rat, Human, Mouse
Clonality	Monoclonal
Format	Liquid

Description

Anti-Cadherin 10 Rabbit Monoclonal Antibody . Tested in WB application. This antibody reacts with Human, Mouse, Rat.

Anti-Cadherin 10 Rabbit Monoclonal Antibody - Additional Information

Gene ID 1008

Other Names

Cadherin-10, T2-cadherin, CDH10

Calculated MW

140 kDa KDa

Application Details

WB 1:500-1:2000

Contents

Rabbit IgG in phosphate buffered saline, pH 7.4, 150mM NaCl, 0.02% sodium azide and 50% glycerol, 0.4-0.5mg/ml BSA.

Immunogen

A synthesized peptide derived from human Cadherin 10

Purification

Affinity-chromatography

Storage

Store at -20°C for one year. For short term storage and frequent use, store at 4°C for up to one month. Avoid repeated freeze-thaw cycles.

Anti-Cadherin 10 Rabbit Monoclonal Antibody - Protein Information

Name CDH10

Function

Cadherins are calcium-dependent cell adhesion proteins. They preferentially interact with themselves in a homophilic manner in connecting cells; cadherins may thus contribute to the sorting of heterogeneous cell types.

Cellular Location

Cell membrane; Single-pass type I membrane protein

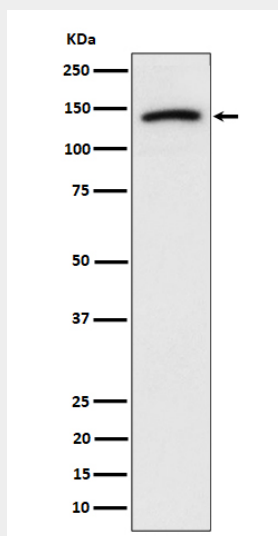
Tissue Location

Predominantly expressed in brain. Also found in adult and fetal kidney. Very low levels detected in prostate and fetal lung.

Anti-Cadherin 10 Rabbit Monoclonal Antibody - Protocols

Provided below are standard protocols that you may find useful for product applications.

- [Western Blot](#)
- [Blocking Peptides](#)
- [Dot Blot](#)
- [Immunohistochemistry](#)
- [Immunofluorescence](#)
- [Immunoprecipitation](#)
- [Flow Cytometry](#)
- [Cell Culture](#)

Anti-Cadherin 10 Rabbit Monoclonal Antibody - Images

Western blot analysis of Cadherin 10 expression in U-87 MG cell lysate.