

Anti-MPP1 Rabbit Monoclonal Antibody
Catalog # ABO16351**Specification**

Anti-MPP1 Rabbit Monoclonal Antibody - Product Information

Application	WB
Primary Accession	Q00013
Host	Rabbit
Isotype	IgG
Reactivity	Human
Clonality	Monoclonal
Format	Liquid

Description

Anti-MPP1 Rabbit Monoclonal Antibody . Tested in WB application. This antibody reacts with Human.

Anti-MPP1 Rabbit Monoclonal Antibody - Additional Information

Gene ID 4354

Other Names

55 kDa erythrocyte membrane protein, p55, Membrane protein, palmitoylated 1, MPP1, DXS552E, EMP55

Calculated MW

55 kDa KDa

Application Details

WB 1:500-1:2000

Contents

Rabbit IgG in phosphate buffered saline, pH 7.4, 150mM NaCl, 0.02% sodium azide and 50% glycerol, 0.4-0.5mg/ml BSA.

Immunogen

A synthesized peptide derived from human MPP1

Purification

Affinity-chromatography

Storage

Store at -20°C for one year. For short term storage and frequent use, store at 4°C for up to one month. Avoid repeated freeze-thaw cycles.

Anti-MPP1 Rabbit Monoclonal Antibody - Protein Information

Name MPP1

Synonyms DXS552E, EMP55

Function

Essential regulator of neutrophil polarity. Regulates neutrophil polarization by regulating AKT1 phosphorylation through a mechanism that is independent of PIK3CG activity (By similarity).

Cellular Location

Cell membrane; Lipid-anchor. Cell projection, stereocilium {ECO:0000250|UniProtKB:P70290}. Note=Colocalizes with WHRN at stereocilium tip during hair cell development (By similarity). Colocalizes with PALS1 in the retina, at the outer limiting membrane (OLM) (By similarity). Colocalizes with WHRN in the retina, at the outer limiting membrane (OLM), outer plexiform layer (OPL), basal bodies and at the connecting cilium (CC) (By similarity). Colocalizes with NF2 in non-myelin-forming Schwann cells (PubMed:19144871) {ECO:0000250|UniProtKB:P70290, ECO:0000269|PubMed:19144871}

Tissue Location

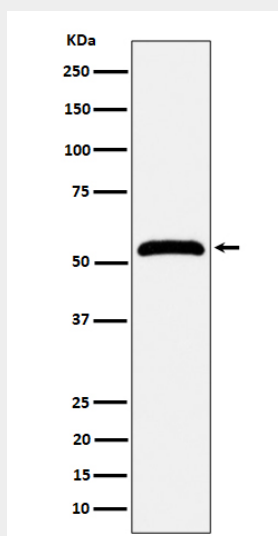
Ubiquitous..

Anti-MPP1 Rabbit Monoclonal Antibody - Protocols

Provided below are standard protocols that you may find useful for product applications.

- [Western Blot](#)
- [Blocking Peptides](#)
- [Dot Blot](#)
- [Immunohistochemistry](#)
- [Immunofluorescence](#)
- [Immunoprecipitation](#)
- [Flow Cytometry](#)
- [Cell Culture](#)

Anti-MPP1 Rabbit Monoclonal Antibody - Images



Western blot analysis of MPP1 expression in Jurkat cell lysate.