

Anti-SARA Rabbit Monoclonal Antibody
Catalog # ABO16353**Specification**

Anti-SARA Rabbit Monoclonal Antibody - Product Information

Application	WB, IHC
Primary Accession	O95405
Host	Rabbit
Isotype	IgG
Reactivity	Human
Clonality	Monoclonal
Format	Liquid

Description

Anti-SARA Rabbit Monoclonal Antibody . Tested in WB, IHC applications. This antibody reacts with Human.

Anti-SARA Rabbit Monoclonal Antibody - Additional Information

Gene ID 9372

Other Names

Zinc finger FYVE domain-containing protein 9, Mothers against decapentaplegic homolog-interacting protein, Madh-interacting protein, Novel serine protease, NSP, Receptor activation anchor, hSARA, Smad anchor for receptor activation, ZFYVE9, MADHIP, SARA, SMADIP

Calculated MW

180 kDa KDa

Application Details

WB 1:500-1:2000
IHC 1:50-1:200

Contents

Rabbit IgG in phosphate buffered saline, pH 7.4, 150mM NaCl, 0.02% sodium azide and 50% glycerol, 0.4-0.5mg/ml BSA.

Immunogen

A synthesized peptide derived from human SARA

Purification

Affinity-chromatography

Storage

Store at -20°C for one year. For short term storage and frequent use, store at 4°C for up to one month. Avoid repeated freeze-thaw cycles.

Anti-SARA Rabbit Monoclonal Antibody - Protein Information

Name ZFYVE9

Synonyms MADHIP, SARA, SMADIP

Function

Early endosomal protein that functions to recruit SMAD2/SMAD3 to intracellular membranes and to the TGF-beta receptor. Plays a significant role in TGF-mediated signaling by regulating the subcellular location of SMAD2 and SMAD3 and modulating the transcriptional activity of the SMAD3/SMAD4 complex. Possibly associated with TGF-beta receptor internalization.

Cellular Location

Cytoplasm. Early endosome membrane.

Tissue Location

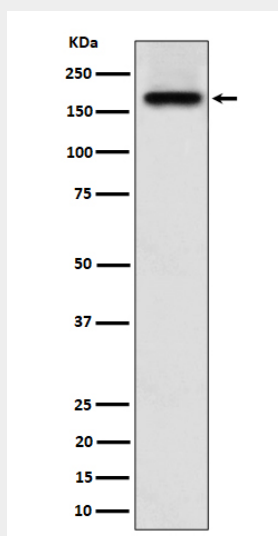
Ubiquitous. In the brain found primarily in the cerebrovascular smooth muscle cells and reactive astrocytes

Anti-SARA Rabbit Monoclonal Antibody - Protocols

Provided below are standard protocols that you may find useful for product applications.

- [Western Blot](#)
- [Blocking Peptides](#)
- [Dot Blot](#)
- [Immunohistochemistry](#)
- [Immunofluorescence](#)
- [Immunoprecipitation](#)
- [Flow Cytometry](#)
- [Cell Culture](#)

Anti-SARA Rabbit Monoclonal Antibody - Images



Western blot analysis of SARA expression in A673 cell lysate.