

**Anti-UBA3 Rabbit Monoclonal Antibody**  
**Catalog # ABO16355****Specification**

---

**Anti-UBA3 Rabbit Monoclonal Antibody - Product Information**

Application	WB
Primary Accession	<a href="#">Q8TBC4</a>
Host	Rabbit
Isotype	IgG
Reactivity	Rat, Human, Mouse
Clonality	Monoclonal
Format	Liquid

**Description**

Anti-UBA3 Rabbit Monoclonal Antibody . Tested in WB application. This antibody reacts with Human, Mouse, Rat.

**Anti-UBA3 Rabbit Monoclonal Antibody - Additional Information**

**Gene ID** 9039

**Other Names**

NEDD8-activating enzyme E1 catalytic subunit, 6.2.1.64, NEDD8-activating enzyme E1C, Ubiquitin-activating enzyme E1C, Ubiquitin-like modifier-activating enzyme 3, Ubiquitin-activating enzyme 3, UBA3, UBE1C

**Calculated MW**

50 kDa KDa

**Application Details**

WB 1:500-1:2000

**Contents**

Rabbit IgG in phosphate buffered saline, pH 7.4, 150mM NaCl, 0.02% sodium azide and 50% glycerol, 0.4-0.5mg/ml BSA.

**Immunogen**

A synthesized peptide derived from human UBA3

**Purification**

Affinity-chromatography

**Storage**

**Store at -20°C for one year. For short term storage and frequent use, store at 4°C for up to one month. Avoid repeated freeze-thaw cycles.**

**Anti-UBA3 Rabbit Monoclonal Antibody - Protein Information**

**Name** UBA3

**Synonyms** UBE1C

**Function**

Catalytic subunit of the dimeric UBA3-NAE1 E1 enzyme. E1 activates NEDD8 by first adenylating its C-terminal glycine residue with ATP, thereafter linking this residue to the side chain of the catalytic cysteine, yielding a NEDD8-UBA3 thioester and free AMP. E1 finally transfers NEDD8 to the catalytic cysteine of UBE2M. Down- regulates steroid receptor activity. Necessary for cell cycle progression.

**Tissue Location**

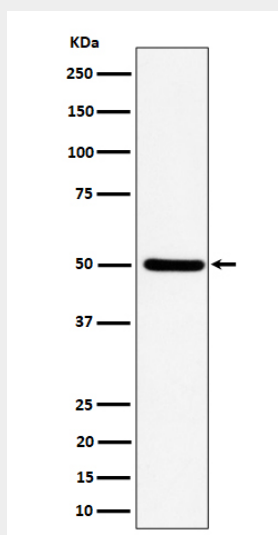
Ubiquitously expressed.

**Anti-UBA3 Rabbit Monoclonal Antibody - Protocols**

Provided below are standard protocols that you may find useful for product applications.

- [Western Blot](#)
- [Blocking Peptides](#)
- [Dot Blot](#)
- [Immunohistochemistry](#)
- [Immunofluorescence](#)
- [Immunoprecipitation](#)
- [Flow Cytometry](#)
- [Cell Culture](#)

**Anti-UBA3 Rabbit Monoclonal Antibody - Images**



Western blot analysis of UBA3 expression in HeLa cell lysate.