

**Anti-N4BP1 Rabbit Monoclonal Antibody**  
**Catalog # ABO16363****Specification**

---

**Anti-N4BP1 Rabbit Monoclonal Antibody - Product Information**

Application	WB
Primary Accession	<a href="#">Q6A037</a>
Host	Rabbit
Isotype	IgG
Reactivity	Rat, Mouse
Clonality	Monoclonal
Format	Liquid

**Description**

Anti-N4BP1 Rabbit Monoclonal Antibody . Tested in WB application. This antibody reacts with Mouse, Rat.

**Anti-N4BP1 Rabbit Monoclonal Antibody - Additional Information**

**Gene ID** 80750

**Other Names**

NEDD4-binding protein 1, N4BP1, 3.1.-., N4bp1 {ECO:0000303|PubMed:11717310, ECO:0000312|MGI:MGI:2136825}

**Calculated MW**

110 kDa KDa

**Application Details**

WB 1:500-1:2000

**Contents**

Rabbit IgG in phosphate buffered saline, pH 7.4, 150mM NaCl, 0.02% sodium azide and 50% glycerol, 0.4-0.5mg/ml BSA.

**Immunogen**

A synthesized peptide derived from human N4BP1

**Purification**

Affinity-chromatography

Storage

**Store at -20°C for one year. For short term storage and frequent use, store at 4°C for up to one month. Avoid repeated freeze-thaw cycles.**

**Anti-N4BP1 Rabbit Monoclonal Antibody - Protein Information**

**Name** N4bp1 {ECO:0000303|PubMed:11717310, ECO:0000312|MGI:MGI:2136825}

### Function

Potent suppressor of cytokine production that acts as a regulator of innate immune signaling and inflammation (PubMed:<a href="http://www.uniprot.org/citations/32971525" target="\_blank">32971525</a>). Acts as a key negative regulator of select cytokine and chemokine responses elicited by TRIF-independent Toll-like receptors (TLRs), thereby limiting inflammatory cytokine responses to minor insults (PubMed:<a href="http://www.uniprot.org/citations/32971525" target="\_blank">32971525</a>). In response to more threatening pathogens, cleaved by CASP8 downstream of TLR3 or TLR4, leading to its inactivation, thereby allowing production of inflammatory cytokines (PubMed:<a href="http://www.uniprot.org/citations/32971525" target="\_blank">32971525</a>). Acts as a restriction factor against some viruses: restricts viral replication by binding to mRNA viruses and mediating their degradation via its ribonuclease activity (By similarity). Also acts as an inhibitor of the E3 ubiquitin-protein ligase ITCH: acts by interacting with the second WW domain of ITCH, leading to compete with ITCH's substrates and impairing ubiquitination of substrates (PubMed:<a href="http://www.uniprot.org/citations/17592138" target="\_blank">17592138</a>).

### Cellular Location

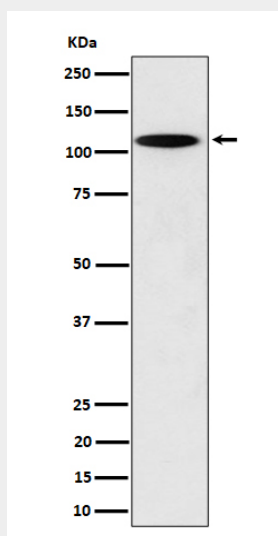
Cytoplasm, cytosol. Nucleus. Nucleus, nucleolus. Nucleus, PML body. Note=Primarily localizes to the nucleolus (PubMed:20233849). Also localizes to the PML nuclear bodies, when desumoylated (PubMed:20233849).

### Anti-N4BP1 Rabbit Monoclonal Antibody - Protocols

Provided below are standard protocols that you may find useful for product applications.

- [Western Blot](#)
- [Blocking Peptides](#)
- [Dot Blot](#)
- [Immunohistochemistry](#)
- [Immunofluorescence](#)
- [Immunoprecipitation](#)
- [Flow Cytometry](#)
- [Cell Culture](#)

### Anti-N4BP1 Rabbit Monoclonal Antibody - Images



Western blot analysis of N4BP1 expression in PC12 cell lysate.