

Anti-CTP synthase / CTPS Rabbit Monoclonal Antibody
Catalog # ABO16373**Specification****Anti-CTP synthase / CTPS Rabbit Monoclonal Antibody - Product Information**

Application	WB, FC
Primary Accession	P17812
Host	Rabbit
Isotype	IgG
Reactivity	Human, Mouse
Clonality	Monoclonal
Format	Liquid

Description

Anti-CTP synthase / CTPS Rabbit Monoclonal Antibody . Tested in WB, Flow Cytometry applications.
This antibody reacts with Human, Mouse.

Anti-CTP synthase / CTPS Rabbit Monoclonal Antibody - Additional Information

Gene ID 1503

Other Names

CTP synthase 1, 6.3.4.2, CTP synthetase 1, UTP--ammonia ligase 1, CTPS1 (http://www.genenames.org/cgi-bin/gene_symbol_report?hgnc_id=2519)
HGNC:2519

Calculated MW

72 kDa KDa

Application Details

WB 1:500-1:2000
FC 1:50

Contents

Rabbit IgG in phosphate buffered saline, pH 7.4, 150mM NaCl, 0.02% sodium azide and 50% glycerol, 0.4-0.5mg/ml BSA.

Immunogen

A synthesized peptide derived from human CTP synthase / CTPS

Purification

Affinity-chromatography

Storage

Store at -20°C for one year. For short term storage and frequent use, store at 4°C for up to one month. Avoid repeated freeze-thaw cycles.

Anti-CTP synthase / CTPS Rabbit Monoclonal Antibody - Protein Information

Name CTPS1 ([HGNC:2519](#))

Function

This enzyme is involved in the de novo synthesis of CTP, a precursor of DNA, RNA and phospholipids. Catalyzes the ATP-dependent amination of UTP to CTP with either L-glutamine or ammonia as a source of nitrogen. This enzyme and its product, CTP, play a crucial role in the proliferation of activated lymphocytes and therefore in immunity.

Cellular Location

Cytoplasm, cytosol. Note=Mainly cytosolic but when active detected in long filamentous structures (PubMed:25223282). Co-localizes with TNK2 in the cytosolic filaments (By similarity). {ECO:0000250|UniProtKB:P70698, ECO:0000269|PubMed:25223282}

Tissue Location

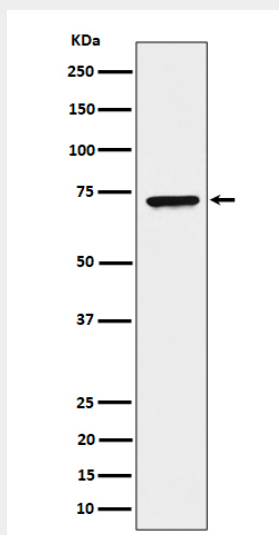
Widely expressed..

Anti-CTP synthase / CTPS Rabbit Monoclonal Antibody - Protocols

Provided below are standard protocols that you may find useful for product applications.

- [Western Blot](#)
- [Blocking Peptides](#)
- [Dot Blot](#)
- [Immunohistochemistry](#)
- [Immunofluorescence](#)
- [Immunoprecipitation](#)
- [Flow Cytometry](#)
- [Cell Culture](#)

Anti-CTP synthase / CTPS Rabbit Monoclonal Antibody - Images



Western blot analysis of CTP synthase / CTPS expression in HeLa cell lysate.